

# \$12 - 1510, 1520 2 Avenue S, Lethbridge

MLS® #A2255987

**\$12**

0 Bedroom, 0.00 Bathroom,  
Commercial on 0.50 Acres

Upper Eastside, Lethbridge, Alberta

Amazing space with overhead door (10!) great  
off street parking, great visibility at a  
reasonable price

Built in 1948

## Essential Information

MLS® #	A2255987
Price	\$12
Bathrooms	0.00
Acres	0.50
Year Built	1948
Type	Commercial
Sub-Type	Retail
Status	Active

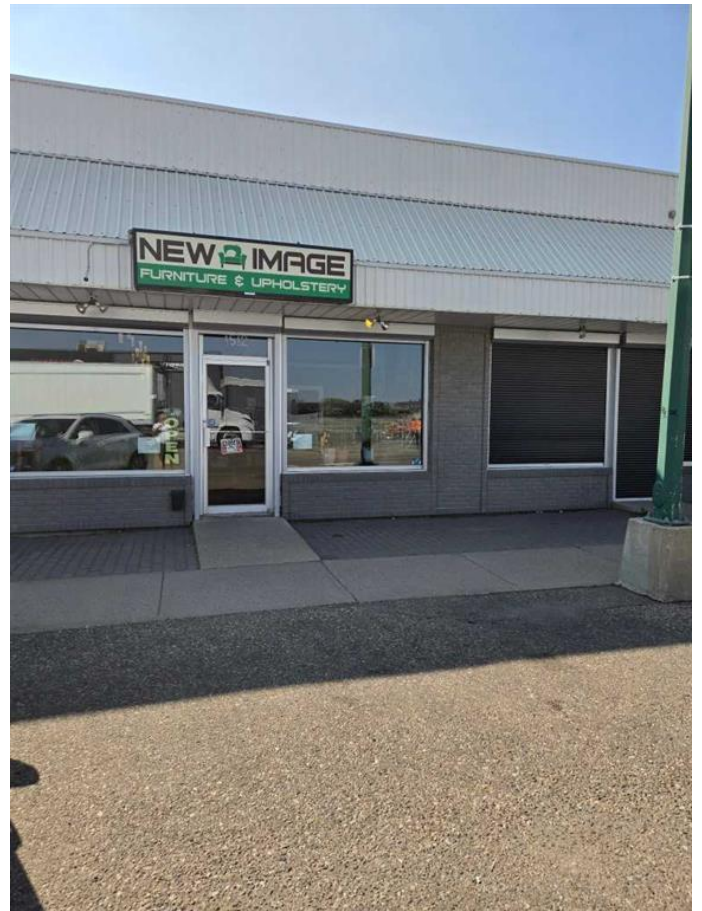
## Community Information

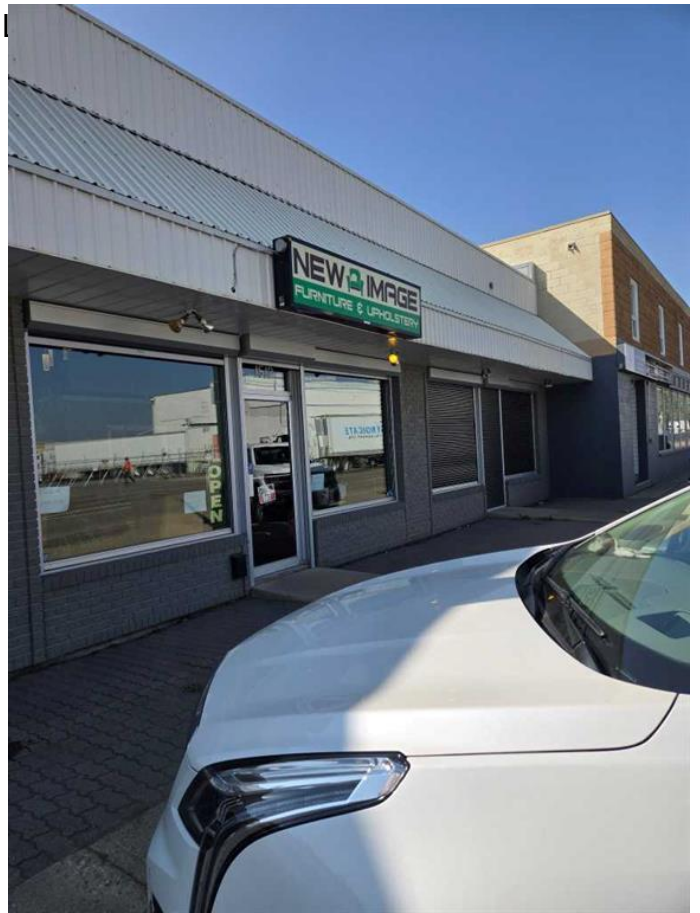
Address	1510, 1520 2 Avenue S
Subdivision	Upper Eastside
City	Lethbridge
County	Lethbridge
Province	Alberta
Postal Code	T1J0G1

## Additional Information

Date Listed	September 8th, 2025
Days on Market	4
Zoning	C-G

## Listing Details





Data is supplied by Pillar 9â„¢ MLSÂ® System. Pillar 9â„¢ is the owner of the copyright in its MLSÂ® System. Data is deemed reliable but is not guaranteed accurate by Pillar 9â„¢. The trademarks MLSÂ®, Multiple Listing ServiceÂ® and the associated logos are owned by The Canadian Real Estate Association (CREA) and identify the quality of services provided by real estate professionals who are members of CREA. Used under license.