

# \$194,900 - 822 15 Street, Wainwright

MLS® #A2248030

**\$194,900**

3 Bedroom, 2.00 Bathroom, 960 sqft  
Residential on 0.13 Acres

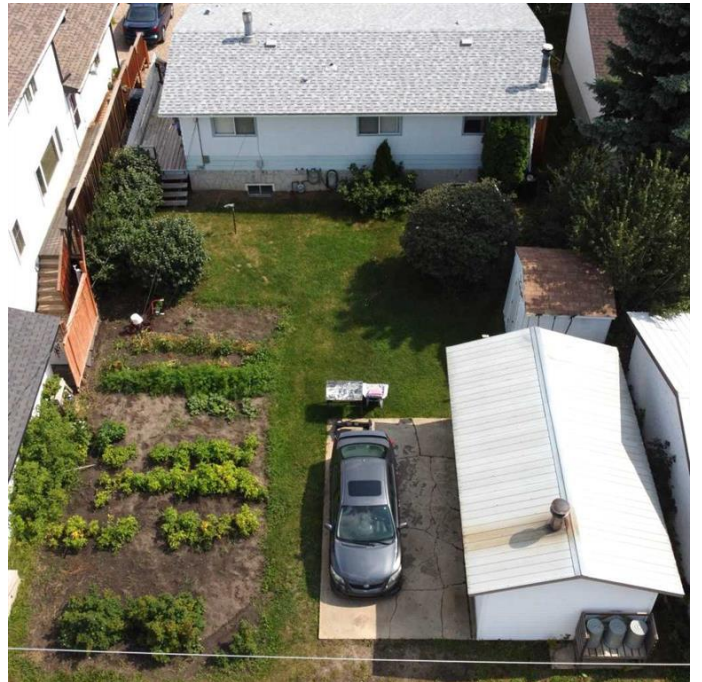
NONE, Wainwright, Alberta

Affordable 3 bedroom family home with workshop, large garden & located right across the street from the Splash park! Located near the schools, this 3 property offers 3 upstairs bedrooms, eat-in kitchen and sizeable living room. The 4 pc. main bath is accessible directly to the primary bedroom to make it a "pass through" ensuite as well! The basement is home to a spacious family room, 2 pc. bath, storage room and laundry/utility space! The backyard hosts a 22' X 12' (wood heat) workshop, 8' X 8' shed and a lovely garden area for those with a green thumb! Shingles are new in 2025. Furnace will be serviced in the near future to alleviate those concerns to the next lucky owner! Call your favourite realtor today to arrange your personal showing!

Built in 1975

## Essential Information

MLS® #	A2248030
Price	\$194,900
Bedrooms	3
Bathrooms	2.00
Full Baths	1
Half Baths	1
Square Footage	960
Acres	0.13
Year Built	1975



Type	Residential
Sub-Type	Detached
Style	Bungalow
Status	Active

### **Community Information**

Address	822 15 Street
Subdivision	NONE
City	Wainwright
County	Wainwright No. 61, M.D. of
Province	Alberta
Postal Code	T9W 1E6

### **Amenities**

Parking Spaces	3
Parking	Concrete Driveway, Parking Pad

### **Interior**

Interior Features	Ceiling Fan(s), No Smoking Home, Storage, Sump Pump(s)
Appliances	Electric Stove, Microwave, Range Hood, Refrigerator, Washer/Dryer, Window Coverings, Portable Dishwasher
Heating	Forced Air, Natural Gas
Cooling	None
Fireplace	Yes
# of Fireplaces	1
Fireplaces	Wood Burning
Has Basement	Yes
Basement	Finished, Full

### **Exterior**

Exterior Features	Storage
Lot Description	Back Lane, Back Yard, Front Yard, Rectangular Lot
Roof	Asphalt Shingle
Construction	Metal Siding
Foundation	Poured Concrete

### **Additional Information**

Date Listed	August 12th, 2025
Days on Market	39

Zoning R2

## **Listing Details**

Listing Office ROYAL LEPAGE WRIGHT CHOICE REALTY

Data is supplied by Pillar 9â„¸ MLSÂ® System. Pillar 9â„¸ is the owner of the copyright in its MLSÂ® System. Data is deemed reliable but is not guaranteed accurate by Pillar 9â„¸. The trademarks MLSÂ®, Multiple Listing ServiceÂ® and the associated logos are owned by The Canadian Real Estate Association (CREA) and identify the quality of services provided by real estate professionals who are members of CREA. Used under license.