

\$499,900 - 310, 5100 Lakeshore Drive, Sylvan Lake

MLS® #A2244259

\$499,900

2 Bedroom, 2.00 Bathroom, 1,124 sqft

Residential on 0.00 Acres

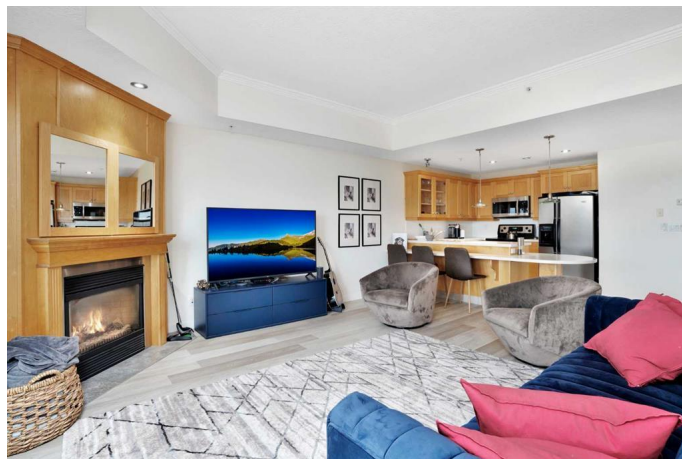
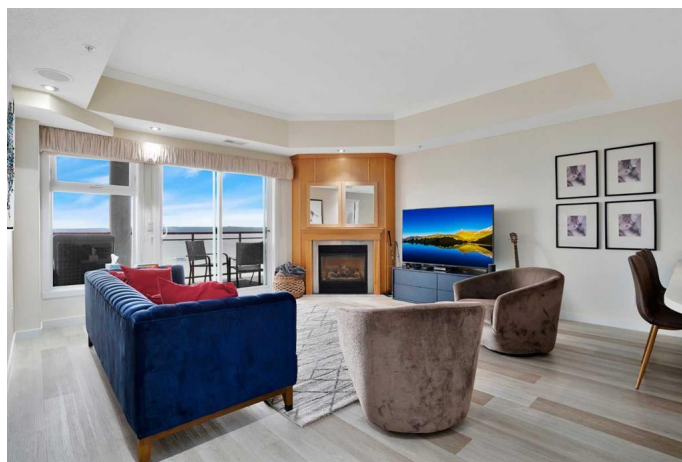
Downtown, Sylvan Lake, Alberta

Experience the pinnacle of lakeside living in this immaculate, turn-key condo in Sylvan Lake. This 3rd-floor, bungalow-style retreat features a sprawling patio that steps directly overlooks a sandy beach, perfect for effortless relaxation and entertaining. Inside, the upgraded interior boasts new flooring, baseboards, trim and a gourmet kitchen with granite countertops, stainless steel appliances. This bright home includes two spacious bedrooms, 2 bathrooms, a cozy gas fireplace, and central A/C. Meticulously maintained and is in pristine condition. Enjoy the convenience of two titled heated parking stalls and an all-inclusive condo fee that covers utilities, internet, and cable. Located just steps from downtown amenities, this is a rare opportunity for move-in-ready luxury. Your perfect lakefront escape awaits.

Built in 2003

Essential Information

MLS® #	A2244259
Price	\$499,900
Bedrooms	2
Bathrooms	2.00
Full Baths	2
Square Footage	1,124
Acres	0.00
Year Built	2003



Type	Residential
Sub-Type	Apartment
Style	Single Level Unit
Status	Active

Community Information

Address	310, 5100 Lakeshore Drive
Subdivision	Downtown
City	Sylvan Lake
County	Red Deer County
Province	Alberta
Postal Code	T4S 2L7

Amenities

Amenities	Elevator(s), Fitness Center, Garbage Chute, Parking, Roof Deck, Secured Parking, Trash
Parking Spaces	2
Parking	Underground

Interior

Interior Features	Closet Organizers, No Animal Home, No Smoking Home, Open Floorplan, Quartz Counters
Appliances	Dishwasher, Electric Stove, Refrigerator, Washer/Dryer
Heating	Fireplace(s), Natural Gas
Cooling	Central Air
Fireplace	Yes
# of Fireplaces	1
Fireplaces	Gas
# of Stories	5

Exterior

Exterior Features	Storage
Roof	Metal
Construction	Concrete

Additional Information

Date Listed	July 29th, 2025
Days on Market	2
Zoning	L-DC

Listing Details

Listing Office Real Broker

Data is supplied by Pillar 9â,,ç MLSÂ® System. Pillar 9â,,ç is the owner of the copyright in its MLSÂ® System. Data is deemed reliable but is not guaranteed accurate by Pillar 9â,,ç. The trademarks MLSÂ®, Multiple Listing ServiceÂ® and the associated logos are owned by The Canadian Real Estate Association (CREA) and identify the quality of services provided by real estate professionals who are members of CREA. Used under license.