

\$495,000 - 418 15 Street S, Lethbridge

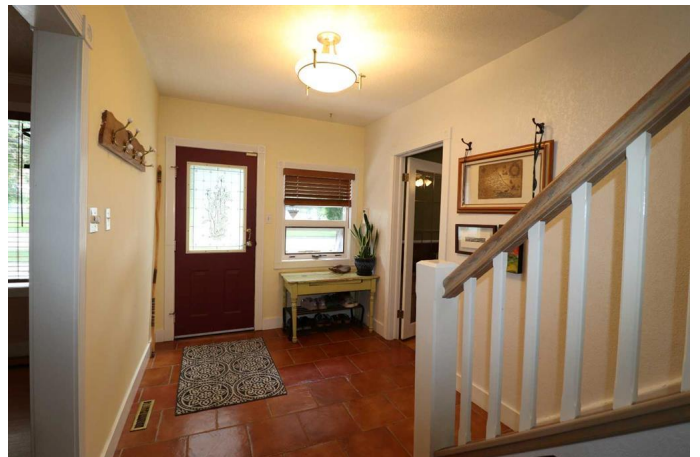
MLS® #A2244248

\$495,000

3 Bedroom, 2.00 Bathroom, 1,822 sqft
Residential on 0.18 Acres

Upper Eastside, Lethbridge, Alberta

Built in 1910, this charming residence is conveniently located in the Upper Eastside of the city; a desirable neighbourhood known for unique character homes and tree lined streets that bring you right to your door. Pride of ownership is evident immediately and continues all the way through the home and yard. An East / West exposure and large windows flood the home with sunshine throughout the day. Interior highlights include spacious rooms, rich hardwood flooring, granite counter tops, Butcherâ€™s block island with breakfast bar, a main-floor office / den, refurbished bathrooms, as well as a convenient, oversized laundry room adjacent to the kitchen offering additional supply or pantry space. The lower level provides even more room to stretch out and relax in with a huge 26â€™ x 13â€™ family room, a workshop, and even more storage. Step outside to enjoy a 2-tiered deck with a natural gas line for your BBQ as well as a covered patio for private and relaxing outdoor living. All with a great vantage point to a beautifully landscaped back yard and elevated garden boxes. In addition, there is plenty of front parking space as well as a rear detached garage. Notable updates over the years include window cladding, heating, and A/C, electrical, plumbing, and shingles. Neighbourhood highlights include schools, shopping, Chinook regional hospital, restaurants and most all the conveniences you could ask for within a short distance. Call a



Real Estate Professional today to book a viewing!

Built in 1910

Essential Information

| | |
|----------------|-------------------|
| MLS® # | A2244248 |
| Price | \$495,000 |
| Bedrooms | 3 |
| Bathrooms | 2.00 |
| Full Baths | 2 |
| Square Footage | 1,822 |
| Acres | 0.18 |
| Year Built | 1910 |
| Type | Residential |
| Sub-Type | Detached |
| Style | 1 and Half Storey |
| Status | Active |

Community Information

| | |
|-------------|-----------------|
| Address | 418 15 Street S |
| Subdivision | Upper Eastside |
| City | Lethbridge |
| County | Lethbridge |
| Province | Alberta |
| Postal Code | T1J 2Z3 |

Amenities

| | |
|----------------|------------------------|
| Parking Spaces | 1 |
| Parking | Single Garage Detached |
| # of Garages | 1 |

Interior

| | |
|-------------------|--|
| Interior Features | Granite Counters |
| Appliances | Dishwasher, Dryer, Gas Stove, Range Hood, Refrigerator, Washer |
| Heating | Forced Air |
| Cooling | Central Air |
| Fireplace | Yes |
| # of Fireplaces | 1 |

| | |
|--------------|-----------------------------|
| Fireplaces | Gas, Living Room |
| Has Basement | Yes |
| Basement | Partial, Partially Finished |

Exterior

| | |
|-------------------|-------------------------------|
| Exterior Features | Garden |
| Lot Description | Back Lane, Garden, Landscaped |
| Roof | Asphalt Shingle |
| Construction | Metal Siding, Stucco |
| Foundation | Poured Concrete |

Additional Information

| | |
|----------------|------------------|
| Date Listed | August 1st, 2025 |
| Days on Market | 1 |
| Zoning | R-L |

Listing Details

| | |
|----------------|---|
| Listing Office | Royal LePage South Country - Lethbridge |
|----------------|---|

Data is supplied by Pillar 9â„¢ MLS® System. Pillar 9â„¢ is the owner of the copyright in its MLS® System. Data is deemed reliable but is not guaranteed accurate by Pillar 9â„¢. The trademarks MLS®, Multiple Listing Service® and the associated logos are owned by The Canadian Real Estate Association (CREA) and identify the quality of services provided by real estate professionals who are members of CREA. Used under license.