

\$414,900 - 147 Blackwolf Way N, Lethbridge

MLS® #A2231284

\$414,900

4 Bedroom, 2.00 Bathroom, 914 sqft

Residential on 0.08 Acres

Blackwolf 2, Lethbridge, Alberta

Bright and clean Bi level, lots of space for two bedrooms up, an open kitchen dining area with two more bedrooms and large family room on the lower level. This one is only 12 years old and has all the features you've been looking for. The backyard is open for your ideas, a lane-way home, a double garage, check out the possibilities with the City Planning Department.

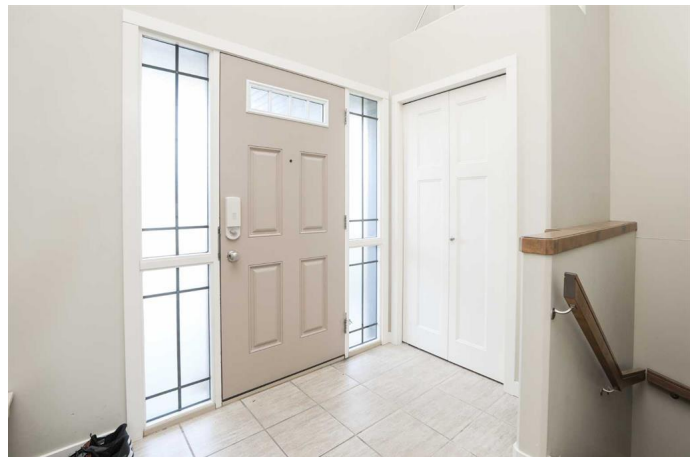
Built in 2013

Essential Information

MLS® #	A2231284
Price	\$414,900
Bedrooms	4
Bathrooms	2.00
Full Baths	2
Square Footage	914
Acres	0.08
Year Built	2013
Type	Residential
Sub-Type	Detached
Style	Modified Bi-Level
Status	Active

Community Information

Address	147 Blackwolf Way N
Subdivision	Blackwolf 2
City	Lethbridge



County	Lethbridge
Province	Alberta
Postal Code	T1H6Z7

Amenities

Parking Spaces	2
Parking	Concrete Driveway, Parking Pad

Interior

Interior Features	Laminate Counters, No Smoking Home, Open Floorplan, Storage
Appliances	Central Air Conditioner, Dishwasher, Electric Oven, Gas Water Heater, Range Hood, Refrigerator, Washer/Dryer
Heating	Forced Air, Natural Gas, ENERGY STAR Qualified Equipment, Make-up Air
Cooling	Central Air
Has Basement	Yes
Basement	Finished, Full

Exterior

Exterior Features	Balcony
Lot Description	Back Lane, Interior Lot, Rectangular Lot, Standard Shaped Lot
Roof	Asphalt Shingle
Construction	Concrete, Vinyl Siding
Foundation	Poured Concrete

Additional Information

Date Listed	June 16th, 2025
Days on Market	11
Zoning	R-M

Listing Details

Listing Office	2 PERCENT REALTY
----------------	------------------

Data is supplied by Pillar 9â„¢ MLS® System. Pillar 9â„¢ is the owner of the copyright in its MLS® System. Data is deemed reliable but is not guaranteed accurate by Pillar 9â„¢. The trademarks MLS®, Multiple Listing Service® and the associated logos are owned by The Canadian Real Estate Association (CREA) and identify the quality of services provided by real estate professionals who are members of CREA. Used under license.