

\$624,900 - 98, 441005 Rge Rd 98, Rural Wainwright No. 61, M.D. of

MLS® #A2230055

\$624,900

3 Bedroom, 1.00 Bathroom, 1,456 sqft
Residential on 0.08 Acres

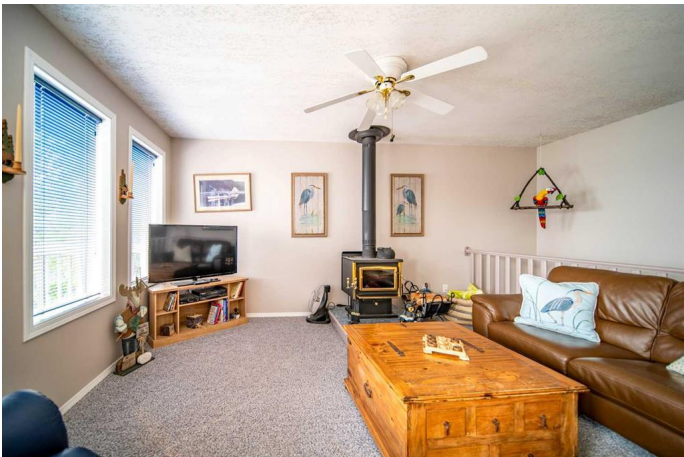
NONE, Rural Wainwright No. 61, M.D. of,
Alberta

Spacious Cabin Retreat at Clear Lake
This beautiful 1,456 sq ft cabin on two levels offers the perfect blend of comfort and lake life charm. Featuring 3 bedrooms, a 4-piece bath, and a spacious open-concept kitchen, dining, and living area, it's ideal for entertaining or relaxing with family. The large main-level family room adds even more versatile living space. Enjoy lake views from the balcony/deck or unwind on the patio. With room to park, a boat dock, and numerous extra features, this Clear Lake property is the ultimate 3-season getaway.

Built in 2000

Essential Information

MLS® #	A2230055
Price	\$624,900
Bedrooms	3
Bathrooms	1.00
Full Baths	1
Square Footage	1,456
Acres	0.08
Year Built	2000
Type	Residential
Sub-Type	Detached
Style	Cottage/Cabin



Status	Active
--------	--------

Community Information

Address	98, 441005 Rge Rd 98
Subdivision	NONE
City	Rural Wainwright No. 61, M.D. of
County	Wainwright No. 61, M.D. of
Province	Alberta
Postal Code	T9W 1T1

Amenities

Parking Spaces	2
Parking	Off Street
Waterfront	Lake, Lake Front

Interior

Interior Features	Ceiling Fan(s), Laminate Counters
Appliances	Electric Stove, Refrigerator
Heating	Wood Stove
Cooling	None
Fireplace	Yes
# of Fireplaces	1
Fireplaces	Wood Burning
Basement	None

Exterior

Exterior Features	Fire Pit, Lighting, Dock, Outdoor Shower
Lot Description	Front Yard, Lawn, Lake
Roof	Asphalt Shingle
Construction	Wood Frame
Foundation	Wood

Additional Information

Date Listed	June 11th, 2025
Days on Market	6
Zoning	CL

Listing Details

Listing Office	CENTURY 21 CONNECT REALTY
----------------	---------------------------

Data is supplied by Pillar 9â„¢ MLS® System. Pillar 9â„¢ is the owner of the copyright in its MLS® System. Data is deemed reliable but is not guaranteed accurate by Pillar 9â„¢. The trademarks MLS®, Multiple Listing Service® and the associated logos are owned by The Canadian Real Estate Association (CREA) and identify the quality of services provided by real estate professionals who are members of CREA. Used under license.