

\$84,000 - Ne-11-37-6 W5, Rural Clearwater County

MLS® #A2228881

\$84,000

0 Bedroom, 0.00 Bathroom,
Land on 85.10 Acres

NONE, Rural Clearwater County, Alberta

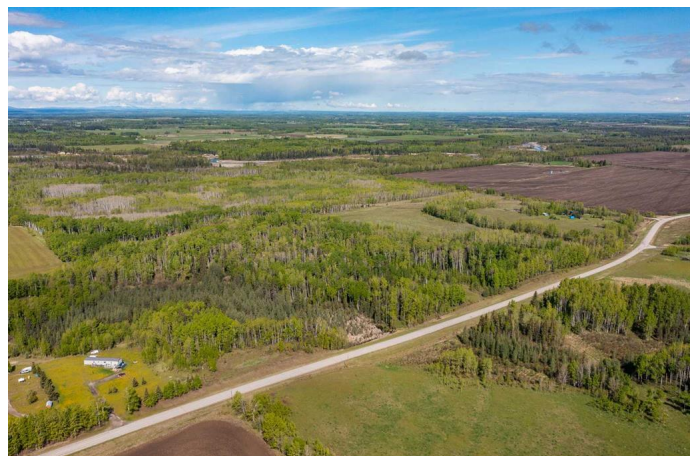
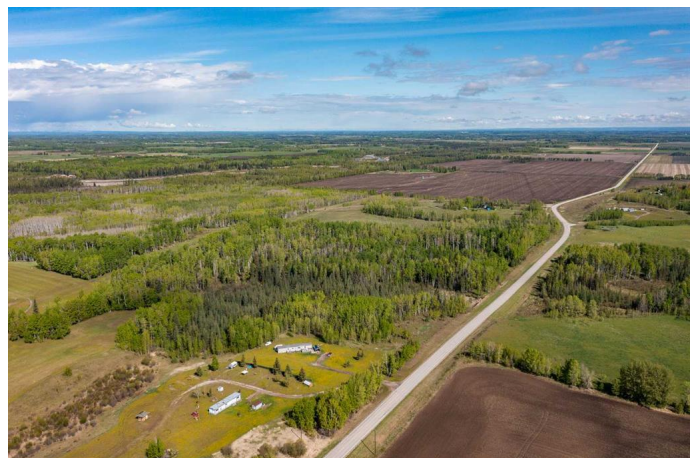
85 Acre Grazing Lease North of Caroline --
This grazing lease encompasses an 85-acre parcel situated north of Caroline, Alberta, along Range Road 6-1. The land offers a carrying capacity of 42 AUMs, suitable for livestock grazing. The lease provides exclusive rights for grazing purposes, with terms and conditions governed by the Public Lands Act and associated regulations. Leaseholders are responsible for sustainable range management practices to maintain the ecological health of the land. Current lease is a 10 year term (May 01, 2021 to April 30, 2031).

Essential Information

MLS® #	A2228881
Price	\$84,000
Bathrooms	0.00
Acres	85.10
Type	Land
Sub-Type	Residential Land
Status	Active

Community Information

Address	Ne-11-37-6 W5
Subdivision	NONE
City	Rural Clearwater County
County	Clearwater County
Province	Alberta



Postal Code T0M 0M0

Amenities

Waterfront See Remarks

Additional Information

Date Listed June 4th, 2025
Days on Market 64
Zoning Forestry District 1

Listing Details

Listing Office RE/MAX real estate central alberta

Data is supplied by Pillar 9â„¢ MLS® System. Pillar 9â„¢ is the owner of the copyright in its MLS® System. Data is deemed reliable but is not guaranteed accurate by Pillar 9â„¢. The trademarks MLS®, Multiple Listing Service® and the associated logos are owned by The Canadian Real Estate Association (CREA) and identify the quality of services provided by real estate professionals who are members of CREA. Used under license.