

\$10 - 1510a 31st Street N, Lethbridge

MLS® #A2226873

\$10

0 Bedroom, 0.00 Bathroom,
Commercial on 1.39 Acres

Churchill Industrial Park, Lethbridge, Alberta

The subject property offers a flexible end unit for lease with plenty of parking and available yard space. The unit is move-in ready or the landlord is willing to customize the space to best suit the tenant's needs. The layout currently offers functioning offices and an open workspace, along with a large shop and storage mezzanine.

Built in 1980

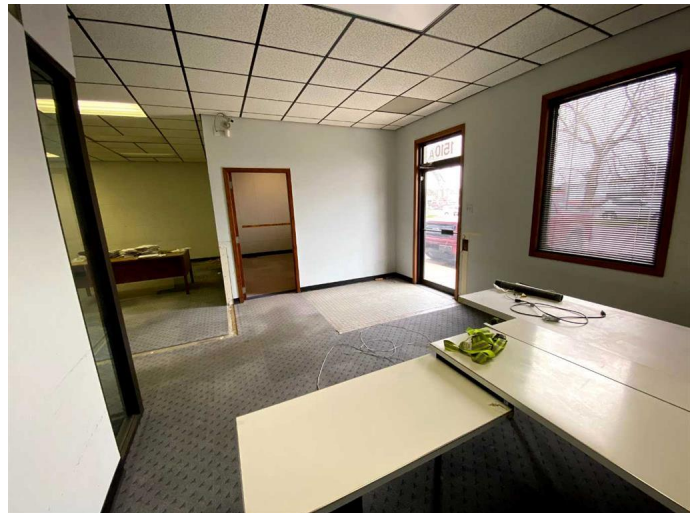
Essential Information

MLS® #	A2226873
Price	\$10
Bathrooms	0.00
Acres	1.39
Year Built	1980
Type	Commercial
Sub-Type	Industrial
Status	Active

Community Information

Address	1510a 31st Street N
Subdivision	Churchill Industrial Park
City	Lethbridge
County	Lethbridge
Province	Alberta
Postal Code	T1H 5J8

Interior



Interior Features Storage

Exterior

Construction Concrete, Mixed

Additional Information

Date Listed June 3rd, 2025

Days on Market 11

Zoning I-G

Listing Details

Listing Office AVISON YOUNG

Data is supplied by Pillar 9â„¢ MLSÂ® System. Pillar 9â„¢ is the owner of the copyright in its MLSÂ® System. Data is deemed reliable but is not guaranteed accurate by Pillar 9â„¢. The trademarks MLSÂ®, Multiple Listing ServiceÂ® and the associated logos are owned by The Canadian Real Estate Association (CREA) and identify the quality of services provided by real estate professionals who are members of CREA. Used under license.