

# \$995,000 - 60 Thompson Crescent, Red Deer

MLS® #A2225223

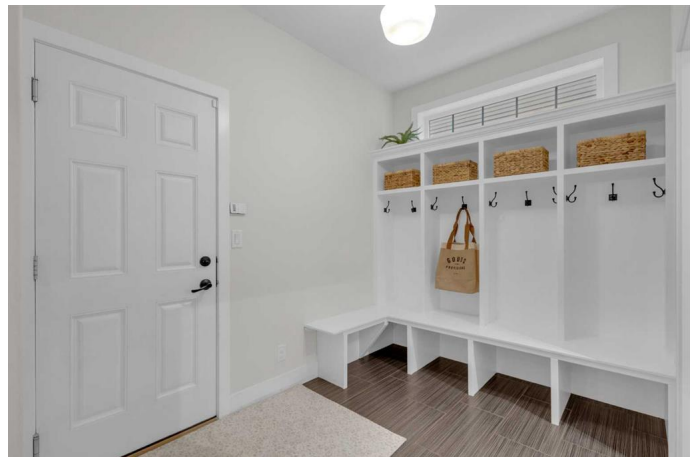
**\$995,000**

6 Bedroom, 4.00 Bathroom, 2,726 sqft

Residential on 0.12 Acres

Timberstone, Red Deer, Alberta

If you're looking for an incredibly spacious home in an excellent family friendly neighbourhood with tasteful finishings throughout--then this home is for you! 60 Thompson Crescent is a fully finished walkout 2 storey home backing onto a green space. This convenient floor plan designed with families in mind with 4 bedrooms + a bonus room upstairs, a den on the main floor and two more bedrooms on the lower level, making it a 6 bedroom + den + bonus room home. The main floor features a mudroom off the attached double car garage with access to the walkthrough butler's pantry. Storage won't be an issue here! The kitchen has all the features you need & dream of. Stainless steel appliances which includes an oversized side by side fridge/freezer combo, new dishwasher (2023), a Bosch double wall oven & 5 burner gas stove. Custom cabinetry to the ceiling with covered hood fan and a large island with quartz countertops completes this space. An open concept formal dining area and living room is perfect for entertaining. The living room features a gas fireplace and large window overlooking the green space. The main floor also features a two piece Powder room, den and a large walk in closet off the mudroom. The second floor impresses with 4 bedrooms, bonus room, laundry room and 2 full bathrooms. The laundry room features a sink and counter workspace with a stacking washer and dryer. Large master bedroom overlooks the green space, and features a



walk in closet with built in custom organizers. Ensuite features his and hers vanities, large jetted soaker tub, a water closet, custom tiled shower with glass doors and a cosmetic seated vanity. The second bathroom upstairs also has double sinks. The lower level has windows all above grade- making it feel like anything but a basement with two bedrooms and a full bathroom and a large family room. A garden door leads out to the lower patio. Other features include: new furnace in 2018, central AC, sound system, HRV, rough in for in floor heat in basement and rough in for garage heater, upper deck overlooking the greenspace. Several amenities close by such as parks, trails, two golf courses, shopping, restaurants, schools and more!

Built in 2013

### **Essential Information**

|                |             |
|----------------|-------------|
| MLS® #         | A2225223    |
| Price          | \$995,000   |
| Bedrooms       | 6           |
| Bathrooms      | 4.00        |
| Full Baths     | 3           |
| Half Baths     | 1           |
| Square Footage | 2,726       |
| Acres          | 0.12        |
| Year Built     | 2013        |
| Type           | Residential |
| Sub-Type       | Detached    |
| Style          | 2 Storey    |
| Status         | Active      |

### **Community Information**

|             |                      |
|-------------|----------------------|
| Address     | 60 Thompson Crescent |
| Subdivision | Timberstone          |
| City        | Red Deer             |
| County      | Red Deer             |

|             |         |
|-------------|---------|
| Province    | Alberta |
| Postal Code | T4P 0N8 |

### Amenities

|                |  |
|----------------|--|
| Parking Spaces | 4  |
| Parking        | Double Garage Attached, Garage Door Opener |
| # of Garages   | 2  |

### Interior

|                   |   |
|-------------------|---|
| Interior Features | Built-in Features, Closet Organizers, Double Vanity, French Door, Jetted Tub, Kitchen Island, Open Floorplan, Pantry, Separate Entrance, Walk-In Closet(s), Wired for Sound |
| Appliances        | Built-In Oven, Central Air Conditioner, Dishwasher, Dryer, Garage Control(s), Microwave, Range Hood, Refrigerator, Stove(s), Washer   |
| Heating           | In Floor Roughed-In, Forced Air, Natural Gas  |
| Cooling           | Central Air   |
| Fireplace         | Yes   |
| # of Fireplaces   | 1   |
| Fireplaces        | Gas, Living Room, Mantle, Tile  |
| Has Basement      | Yes   |
| Basement          | Exterior Entry, Finished, Full, Walk-Out  |

### Exterior

|                   |  |
|-------------------|--|
| Exterior Features | BBQ gas line                                     |
| Lot Description   | Lawn, Low Maintenance Landscape, Street Lighting |
| Roof              | Asphalt Shingle                                  |
| Construction      | Stone, Vinyl Siding                              |
| Foundation        | Poured Concrete                                  |

### Additional Information

|                |                |
|----------------|----------------|
| Date Listed    | May 27th, 2025 |
| Days on Market | 11             |
| Zoning         | R1             |

### Listing Details

|                |                    |
|----------------|--------------------|
| Listing Office | Century 21 Maximum |
|----------------|--------------------|

Data is supplied by Pillar 9â„¢ MLS® System. Pillar 9â„¢ is the owner of the copyright in its MLS® System. Data is deemed reliable but is not guaranteed accurate by Pillar 9â„¢. The trademarks MLS®, Multiple Listing Service® and the associated logos are owned by The Canadian Real Estate Association (CREA) and identify the quality of services provided by real estate professionals who are members of CREA. Used under license.