

\$265,000 - 1006, 210 Firelight Way W, Lethbridge

MLS® #A2219429

\$265,000

2 Bedroom, 1.00 Bathroom, 558 sqft

Residential on 0.00 Acres

Copperwood, Lethbridge, Alberta

A turn-key townhome just steps away from Firelight Park! This 2 bed, 1 bath unit is a practical option for those entering the real estate market or for those looking to live maintenance free! With an open concept main floor, central air conditioning, a balcony and 2 assigned parking stalls, this property offers ease of living and a great place to call home!

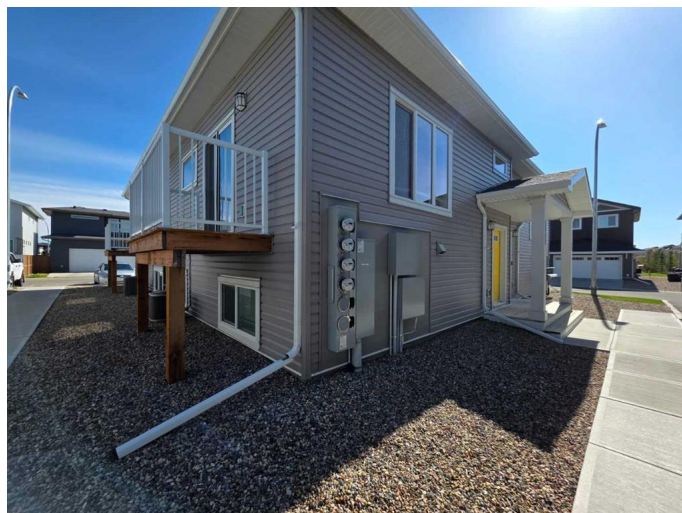
Built in 2019

Essential Information

MLS® #	A2219429
Price	\$265,000
Bedrooms	2
Bathrooms	1.00
Full Baths	1
Square Footage	558
Acres	0.00
Year Built	2019
Type	Residential
Sub-Type	Row/Townhouse
Style	Bi-Level
Status	Active

Community Information

Address	1006, 210 Firelight Way W
Subdivision	Copperwood
City	Lethbridge
County	Lethbridge



Province	Alberta
Postal Code	T1J 4B2

Amenities

Amenities	Parking, Visitor Parking
Parking Spaces	2
Parking	Assigned, Stall

Interior

Interior Features	Closet Organizers, Laminate Counters, Open Floorplan
Appliances	Central Air Conditioner, Dishwasher, Microwave Hood Fan, Refrigerator, Stove(s), Washer/Dryer, Window Coverings
Heating	Forced Air, Natural Gas
Cooling	Central Air
Has Basement	Yes
Basement	Finished, Full

Exterior

Exterior Features	Balcony
Lot Description	Back Lane
Roof	Asphalt Shingle
Construction	Vinyl Siding
Foundation	Poured Concrete

Additional Information

Date Listed	May 9th, 2025
Days on Market	1
Zoning	R-75

Listing Details

Listing Office	Grassroots Realty Group
----------------	-------------------------

Data is supplied by Pillar 9â„¢ MLS® System. Pillar 9â„¢ is the owner of the copyright in its MLS® System. Data is deemed reliable but is not guaranteed accurate by Pillar 9â„¢. The trademarks MLS®, Multiple Listing Service® and the associated logos are owned by The Canadian Real Estate Association (CREA) and identify the quality of services provided by real estate professionals who are members of CREA. Used under license.