

# \$3,590,000 - 101 Grove Place, Drumheller

MLS® #A2217986

**\$3,590,000**

0 Bedroom, 0.00 Bathroom,  
Commercial on 1.09 Acres

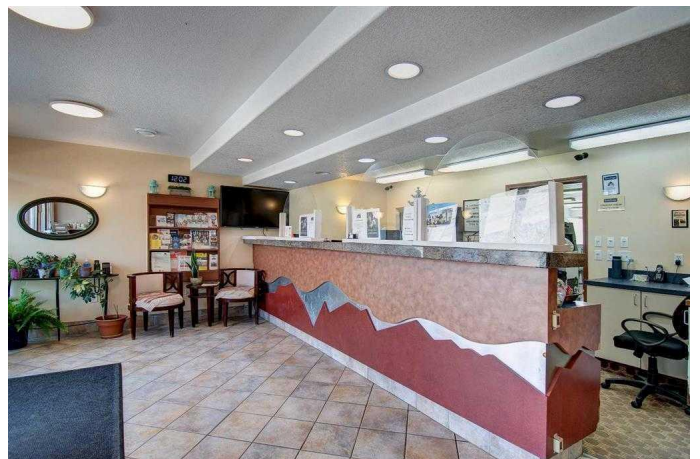
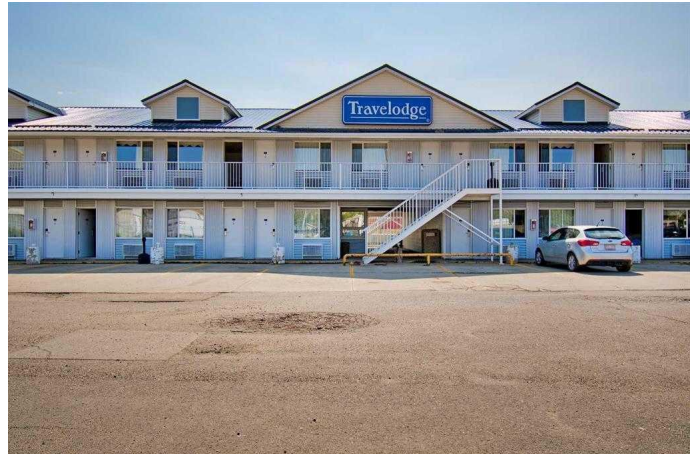
Downtown Drumheller, Drumheller, Alberta

This 2 stories 49 rooms limited services franchise hotel occupies a location with access and exposure to Highway #9. The subject benefits from the synergies created along this highway commercial node. Drumheller's economy is based on agriculture and tourism with the oil and gas industry. Located on the CN main line linking Calgary and Saskatoon, it is a service center for the surrounding agricultural area engaged in grain production, specialty crop that, hay production, and ranching. There are several tourist attraction places such as the Drumheller Valley, the Tyrell Museum of Palaeontology which is the largest museum archaeological display in the world, has always held a degree of appeal for tourists. It is estimated that the number of visitors to the area has tripled to approximately 500,000 per annum. Revenue) 2024: \$1,079,406, 2023:\$1,061,049, NOI) 2024 : \$355,298, 2023: \$376,772

Built in 1979

## Essential Information

MLS® #	A2217986
Price	\$3,590,000
Bathrooms	0.00
Acres	1.09
Year Built	1979
Type	Commercial
Sub-Type	Hotel/Motel



Status	Active
--------	--------

### Community Information

Address	101 Grove Place
Subdivision	Downtown Drumheller
City	Drumheller
County	Drumheller
Province	Alberta
Postal Code	T0J0Y0

### Additional Information

Date Listed	May 6th, 2025
Days on Market	106
Zoning	HWY-C " Highway Commerci

### Listing Details

Listing Office	MaxWell Canyon Creek
----------------	----------------------

Data is supplied by Pillar 9â„¢ MLS® System. Pillar 9â„¢ is the owner of the copyright in its MLS® System. Data is deemed reliable but is not guaranteed accurate by Pillar 9â„¢. The trademarks MLS®, Multiple Listing Service® and the associated logos are owned by The Canadian Real Estate Association (CREA) and identify the quality of services provided by real estate professionals who are members of CREA. Used under license.