

# \$1,495,000 - 14, 137 Wapiti Close, Canmore

MLS® #A2217403

**\$1,495,000**

4 Bedroom, 5.00 Bathroom, 1,990 sqft

Residential on 0.04 Acres

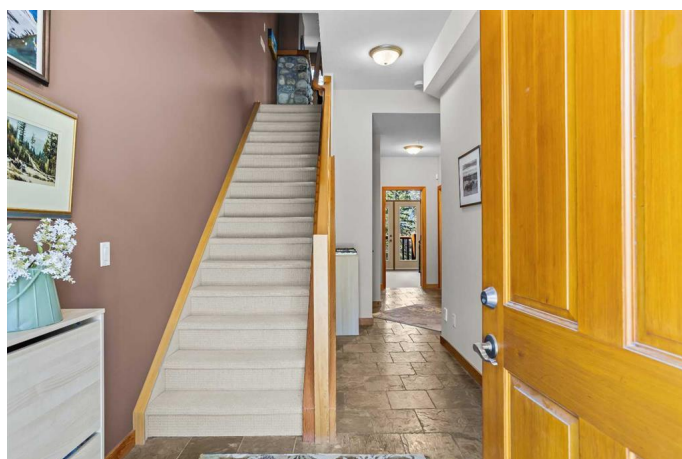
Eagle Terrace, Canmore, Alberta

OPEN HOUSE - this Friday June 11th 14:00 - 16:30pm, and Sunday June 13th 15:30 - 17:30. Step into elevated mountain living with this stunning 2,737 sq ft luxury townhome, perfectly perched to capture sweeping mountain vistas and all-day sunshine. This immaculately designed home offers 3 spacious bedrooms plus a versatile 4th (ideal as a guest suite or family room), along with 4.5 beautifully appointed bathrooms. The open-concept main level seamlessly connects a chef-inspired kitchen, an elegant dining space, and a sunken living room anchored by a striking Riverstone gas fireplace. Step out onto the sun-drenched south-facing deck and soak in the mountain views. Upstairs, soaring vaulted ceilings and oversized windows flood the two primary bedrooms with natural light. On the entry level, you'll find a welcoming guest suite with full bath, a dedicated laundry room, and an oversized garage with ample storage for all your mountain gear. The walkout lower level offers even more space to unwind, with a full bath, rec room or flexible 4th bedroom that opens to a patio.

Built in 2003

## Essential Information

|          |             |
|----------|-------------|
| MLS® #   | A2217403    |
| Price    | \$1,495,000 |
| Bedrooms | 4           |



|                |               |
|----------------|---------------|
| Bathrooms      | 5.00          |
| Full Baths     | 4             |
| Half Baths     | 1             |
| Square Footage | 1,990         |
| Acres          | 0.04          |
| Year Built     | 2003          |
| Type           | Residential   |
| Sub-Type       | Row/Townhouse |
| Style          | 3 Storey      |
| Status         | Active        |

### **Community Information**

|             |                        |
|-------------|------------------------|
| Address     | 14, 137 Wapiti Close   |
| Subdivision | Eagle Terrace          |
| City        | Canmore                |
| County      | Bighorn No. 8, M.D. of |
| Province    | Alberta                |
| Postal Code | T1W 3B2                |

### **Amenities**

|                |                        |
|----------------|------------------------|
| Amenities      | Parking                |
| Parking Spaces | 2                      |
| Parking        | Single Garage Attached |
| # of Garages   | 1                      |

### **Interior**

|                   |  |
|-------------------|--|
| Interior Features | Ceiling Fan(s), Kitchen Island, Open Floorplan, See Remarks, Vaulted Ceiling(s), Walk-In Closet(s) |
| Appliances        | Dishwasher, Dryer, Garage Control(s), Washer, Window Coverings, Electric Range                     |
| Heating           | Forced Air, Natural Gas  |
| Cooling           | None   |
| Fireplace         | Yes  |
| # of Fireplaces   | 1  |
| Fireplaces        | Gas  |
| Has Basement      | Yes  |
| Basement          | Finished, Full, Walk-Out   |

### **Exterior**

|                   |  |
|-------------------|--|
| Exterior Features | Balcony, Lighting                                      |
| Lot Description   | Cul-De-Sac, Low Maintenance Landscape, Street Lighting |
| Roof              | Asphalt Shingle  |
| Construction      | Shingle Siding   |
| Foundation        | Poured Concrete  |

**Additional Information**

|                |               |
|----------------|---------------|
| Date Listed    | May 2nd, 2025 |
| Days on Market | 78            |
| Zoning         | Res Multi     |

**Listing Details**

|                |                      |
|----------------|----------------------|
| Listing Office | RE/MAX Alpine Realty |
|----------------|----------------------|

Data is supplied by Pillar 9â„¢ MLS® System. Pillar 9â„¢ is the owner of the copyright in its MLS® System. Data is deemed reliable but is not guaranteed accurate by Pillar 9â„¢. The trademarks MLS®, Multiple Listing Service® and the associated logos are owned by The Canadian Real Estate Association (CREA) and identify the quality of services provided by real estate professionals who are members of CREA. Used under license.