

# \$385,000 - 119 Lodgepole Drive, Hinton

MLS® #A2217227

## \$385,000

4 Bedroom, 2.00 Bathroom, 960 sqft

Residential on 0.15 Acres

Hardisty, Hinton, Alberta

Well built mill home has much to offer! 2 big bedrooms upstairs, large living room, dining room, kitchen with new counters, sink, backsplash & appliances. The hardwood is in nice condition. Downstairs you will find the utility/laundry room, bathroom, 2 bedrooms & a family room. There is a 24x30 garage with power (approx ten years old), the back yard is fenced. This home is located in a wonderful, quiet, family neighbourhood - walking distance to everything you need - schools, shopping, medical, walking trail (with a creek), gym.

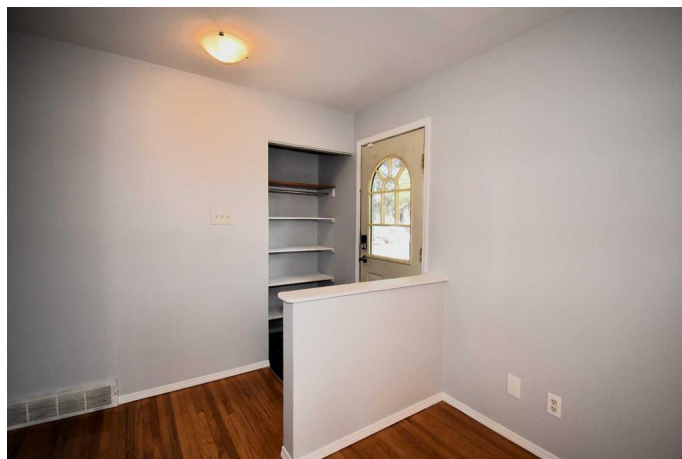
Built in 1956

## Essential Information

MLS® #	A2217227
Price	\$385,000
Bedrooms	4
Bathrooms	2.00
Full Baths	2
Square Footage	960
Acres	0.15
Year Built	1956
Type	Residential
Sub-Type	Detached
Style	Bungalow
Status	Active

## Community Information

Address 119 Lodgepole Drive



Subdivision	Hardisty
City	Hinton
County	Yellowhead County
Province	Alberta
Postal Code	T7V 1E4

### Amenities

Parking Spaces	4
Parking	Double Garage Detached, Off Street
# of Garages	2

### Interior

Interior Features	Laminate Counters
Appliances	Dishwasher, Dryer, Microwave, Range, Refrigerator, Washer
Heating	Forced Air
Cooling	None
Has Basement	Yes
Basement	Full, Partially Finished

### Exterior

Exterior Features	Garden, Private Yard
Lot Description	Back Yard, Few Trees, Front Yard, Landscaped, Lawn, Rectangular Lot, Street Lighting
Roof	Asphalt Shingle
Construction	Vinyl Siding
Foundation	Poured Concrete

### Additional Information

Date Listed	May 2nd, 2025
Days on Market	59
Zoning	R-S2

### Listing Details

Listing Office	COLDWELL BANKER HINTON REAL ESTATE
----------------	------------------------------------

Data is supplied by Pillar 9â„¢ MLS® System. Pillar 9â„¢ is the owner of the copyright in its MLS® System. Data is deemed reliable but is not guaranteed accurate by Pillar 9â„¢. The trademarks MLS®, Multiple Listing Service® and the associated logos are owned by The Canadian Real Estate Association (CREA) and identify the quality of services provided by real estate professionals who are members of CREA. Used under license.