

\$400,000 - Nw 8-68-23-w4, Rural Athabasca County

MLS® #A2216006

\$400,000

0 Bedroom, 0.00 Bathroom,
Land on 150.00 Acres

NONE, Rural Athabasca County, Alberta

#3 of four quarters offered for sale. NE of Island Lake in Athabasca County. #4 soil. Excellent grain or forage land. This quarter is well suited for grain farming. 135 acres open grainland (canola in 2024, wheat in 2023) Offered by sealed tender closing May 14 at noon. Buy one, several or all four quarters. Great investment. Fast possession. Seed immediately.

Essential Information

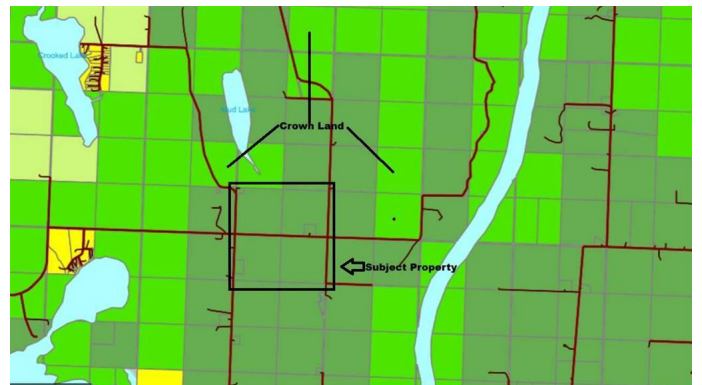
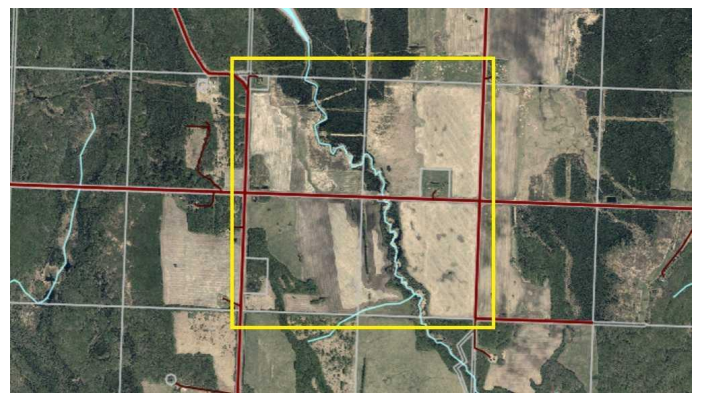
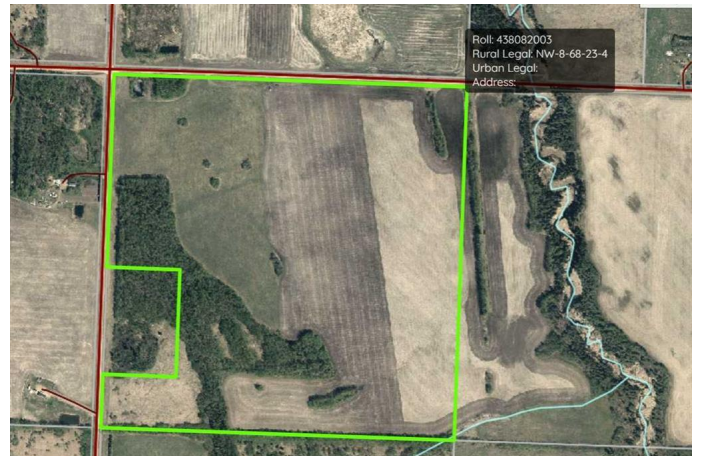
MLS® #	A2216006
Price	\$400,000
Bathrooms	0.00
Acres	150.00
Type	Land
Sub-Type	Residential Land
Status	Active

Community Information

Address	Nw 8-68-23-w4
Subdivision	NONE
City	Rural Athabasca County
County	Athabasca County
Province	Alberta
Postal Code	T9S 2B9

Additional Information

Date Listed	April 29th, 2025
-------------	------------------



Days on Market 2
Zoning AG

Listing Details

Listing Office ROYAL LEPAGE COUNTY REALTY

Data is supplied by Pillar 9â„¢ MLSÂ® System. Pillar 9â„¢ is the owner of the copyright in its MLSÂ® System. Data is deemed reliable but is not guaranteed accurate by Pillar 9â„¢. The trademarks MLSÂ®, Multiple Listing ServiceÂ® and the associated logos are owned by The Canadian Real Estate Association (CREA) and identify the quality of services provided by real estate professionals who are members of CREA. Used under license.