

\$400,000 - Se 17-68-23-w4, Rural Athabasca County

MLS® #A2215996

\$400,000

0 Bedroom, 0.00 Bathroom,
Land on 150.00 Acres

NONE, Rural Athabasca County, Alberta

#2 of four quarters offered for sale. NE of Island Lake in Athabasca County. #4 soil. Excellent grain or forage land. This quarter is well suited for livestock or grain farming. Approx. 40% is pasture and 60% grain (canola in 2024, wheat in 2023) Steel Corrals. \$2500/year surface lease revenue. Offered by sealed tender closing May 14 at noon. Buy one, several or all four quarters. Fast possession. Seed immediately.

Essential Information

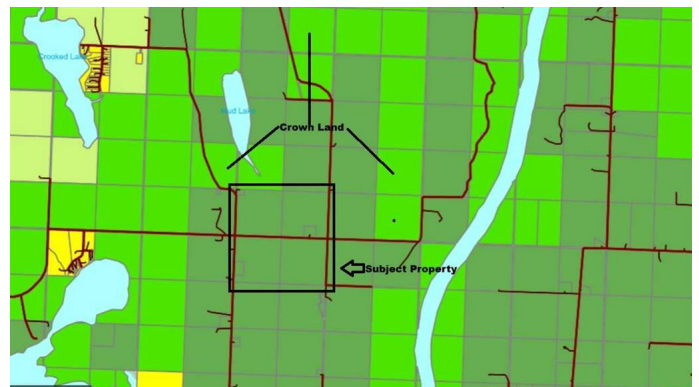
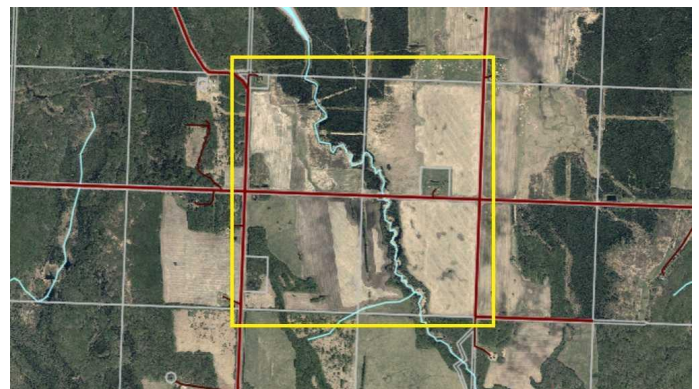
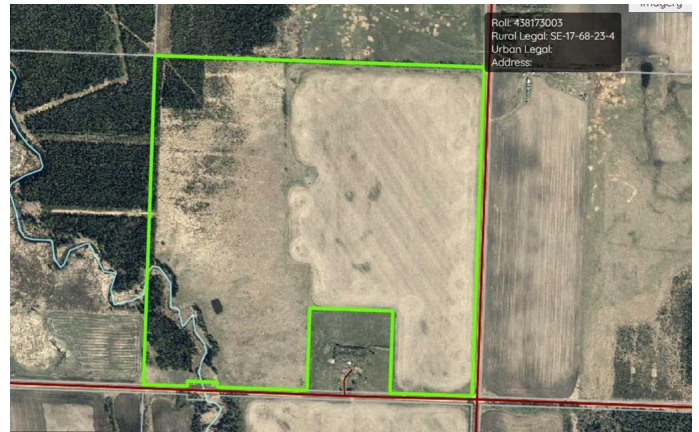
MLS® #	A2215996
Price	\$400,000
Bathrooms	0.00
Acres	150.00
Type	Land
Sub-Type	Residential Land
Status	Active

Community Information

Address	Se 17-68-23-w4
Subdivision	NONE
City	Rural Athabasca County
County	Athabasca County
Province	Alberta
Postal Code	T9S 2B9

Additional Information

Date Listed	April 29th, 2025
-------------	------------------



Days on Market	2
Zoning	AG

Listing Details

Listing Office	ROYAL LEPAGE COUNTY REALTY
----------------	----------------------------

Data is supplied by Pillar 9â„¢ MLS® System. Pillar 9â„¢ is the owner of the copyright in its MLS® System. Data is deemed reliable but is not guaranteed accurate by Pillar 9â„¢. The trademarks MLS®, Multiple Listing Service® and the associated logos are owned by The Canadian Real Estate Association (CREA) and identify the quality of services provided by real estate professionals who are members of CREA. Used under license.