

\$529,900 - 1216 1 Avenue Nw, Drumheller

MLS® #A2210638

\$529,900

5 Bedroom, 3.00 Bathroom, 1,779 sqft

Residential on 0.22 Acres

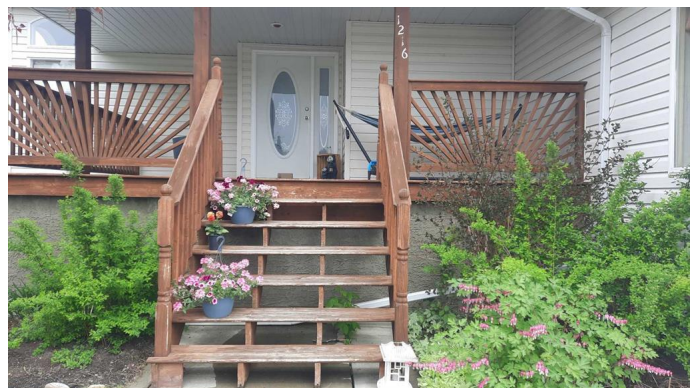
Midland, Drumheller, Alberta

Nestled in the sought after Marshall Estates in Midland. This 2 storey home features covered front porch, Great room with high ceilings, gas fireplace with mantle and loads of Natural light. Eat in kitchen with stainless appliance package, pantry and access to back deck, gas BBQ, fenced yard with garden spot and shed. Main floor also features powder room, laundry and primary bedroom with 4pc ensuite and walk in closet. Grand staircase will take you up to 3 generous sized bedrooms, and main bathroom with walk in shower. Downstairs a large Rec room with built in cabinetry and gas line for 2nd fireplace. 5th bedroom, rough in for bathroom, and good storage. Attached Garage AND A Detached heated garage. Loads off off street parking. With stunning Badlands Views and no neighbours behind, Don't Miss Out !

Built in 2004

Essential Information

MLS® #	A2210638
Price	\$529,900
Bedrooms	5
Bathrooms	3.00
Full Baths	2
Half Baths	1
Square Footage	1,779
Acres	0.22



Year Built	2004
Type	Residential
Sub-Type	Detached
Style	2 Storey
Status	Active

Community Information

Address	1216 1 Avenue Nw
Subdivision	Midland
City	Drumheller
County	Drumheller
Province	Alberta
Postal Code	T0J0Y1

Amenities

Parking Spaces	8
Parking	Double Garage Attached, Double Garage Detached, Off Street, Parking Pad
# of Garages	4

Interior

Interior Features	High Ceilings, Kitchen Island
Appliances	Electric Stove, Microwave, Refrigerator, Washer/Dryer, Window Coverings
Heating	Forced Air, Natural Gas
Cooling	Central Air
Fireplace	Yes
# of Fireplaces	1
Fireplaces	Gas, Living Room, Mantle
Has Basement	Yes
Basement	Finished, Full

Exterior

Exterior Features	Private Yard, Gas Grill
Lot Description	Back Yard, Landscaped, No Neighbours Behind, Back Lane, Backs on to Park/Green Space
Roof	Asphalt Shingle
Construction	Mixed
Foundation	Poured Concrete

Additional Information

Date Listed	April 10th, 2025
Days on Market	159
Zoning	ND

Listing Details

Listing Office	RE/MAX Now
----------------	------------

Data is supplied by Pillar 9â„¢ MLS® System. Pillar 9â„¢ is the owner of the copyright in its MLS® System. Data is deemed reliable but is not guaranteed accurate by Pillar 9â„¢. The trademarks MLS®, Multiple Listing Service® and the associated logos are owned by The Canadian Real Estate Association (CREA) and identify the quality of services provided by real estate professionals who are members of CREA. Used under license.