

\$2,100,000 - 101 Wapiti Close, Canmore

MLS® #A2209393

\$2,100,000

4 Bedroom, 3.00 Bathroom, 1,434 sqft

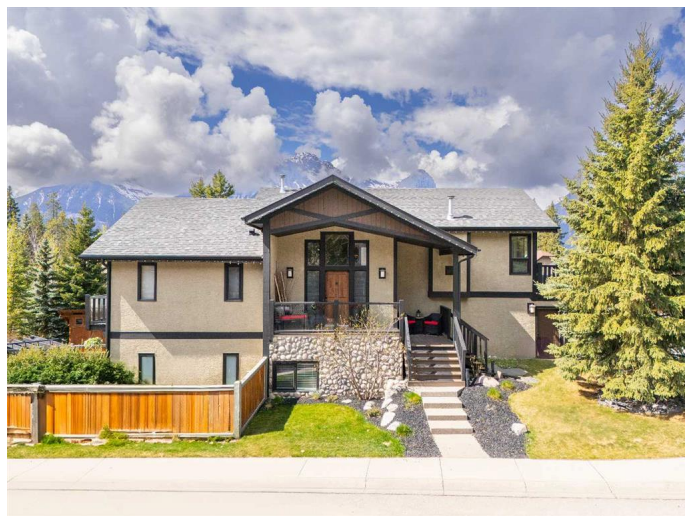
Residential on 0.13 Acres

Eagle Terrace, Canmore, Alberta

Welcome to 101 Wapiti Close, Canmore
Nestled in the highly desirable, family-oriented community of Eagle Terrace, this beautifully maintained single-family home offers the perfect blend of comfort, style, and mountain charm. Boasting 2,178 sqft of living space on a meticulously landscaped 5,530 sqft corner lot, this property enjoys breathtaking, unobstructed views of the Three Sisters, Ha Ling Peak, and Lady MacDonald.

Designed to maximize outdoor living, this home features multiple balconies and outdoor spaces on both the East and West sides, offering sun-soaked spots to relax and take in the views at any time of the day—whether it's morning coffee or evening sunsets. Inside, you'll find 4 spacious bedrooms and 3 full bathrooms, making it ideal for families, hosting guests, or working from home. The home has been thoughtfully updated with brand-new kitchen appliances (2024), a new roof (2023), fresh paint throughout (2025), new lower-level flooring (2025) and new washer and dryer (2023). The walkout basement with in-floor heat adds flexible living space, while the double attached garage and ample storage ensure you have room for all your mountain gear.

Additional features include central air conditioning; irrigation system; two fireplaces on the upper and lower levels; and a bright, welcoming layout that captures the essence of Canmore living. Enjoy quick access to local schools, shops, restaurants, and some of the



region’s best hiking and biking trails” just steps from your door.

Whether you're looking for a full-time family residence or a mountain retreat, this home offers incredible value in one of Canmore’s most sought-after neighbourhoods.

Don’t miss your chance to own a piece of the Rockies!

Built in 1998

Essential Information

MLS® #	A2209393
Price	\$2,100,000
Bedrooms	4
Bathrooms	3.00
Full Baths	3
Square Footage	1,434
Acres	0.13
Year Built	1998
Type	Residential
Sub-Type	Detached
Style	4 Level Split
Status	Active

Community Information

Address	101 Wapiti Close
Subdivision	Eagle Terrace
City	Canmore
County	Bighorn No. 8, M.D. of
Province	Alberta
Postal Code	T1W 3B2

Amenities

Parking Spaces	4
Parking	Double Garage Attached, Driveway, Garage Faces Front
# of Garages	2

Interior

Interior Features	Breakfast Bar, Closet Organizers, High Ceilings, Open Floorplan, Separate Entrance, Storage, Vaulted Ceiling(s), Walk-In Closet(s)
Appliances	Bar Fridge, Central Air Conditioner, Dishwasher, Dryer, Garage Control(s), Gas Range, Microwave, Range Hood, Refrigerator, Washer, Window Coverings
Heating	In Floor, Forced Air, Natural Gas
Cooling	Central Air
Fireplace	Yes
# of Fireplaces	2
Fireplaces	Electric, Family Room, Gas, Living Room
Has Basement	Yes
Basement	Crawl Space, Exterior Entry, Finished, Full, Walk-Out

Exterior

Exterior Features	Balcony, BBQ gas line, Fire Pit, Garden, Private Entrance, Private Yard
Lot Description	Back Yard, Corner Lot, Landscaped, Level, Views
Roof	Shingle
Construction	Mixed
Foundation	Poured Concrete

Additional Information

Date Listed	April 7th, 2025
Days on Market	74
Zoning	R1A

Listing Details

Listing Office	CENTURY 21 NORDIC REALTY
----------------	--------------------------

Data is supplied by Pillar 9â„¢ MLS® System. Pillar 9â„¢ is the owner of the copyright in its MLS® System. Data is deemed reliable but is not guaranteed accurate by Pillar 9â„¢. The trademarks MLS®, Multiple Listing Service® and the associated logos are owned by The Canadian Real Estate Association (CREA) and identify the quality of services provided by real estate professionals who are members of CREA. Used under license.