

\$289,900 - 5314 34 Street, Lloydminster

MLS® #A2208000

\$289,900

4 Bedroom, 2.00 Bathroom, 1,266 sqft

Residential on 0.17 Acres

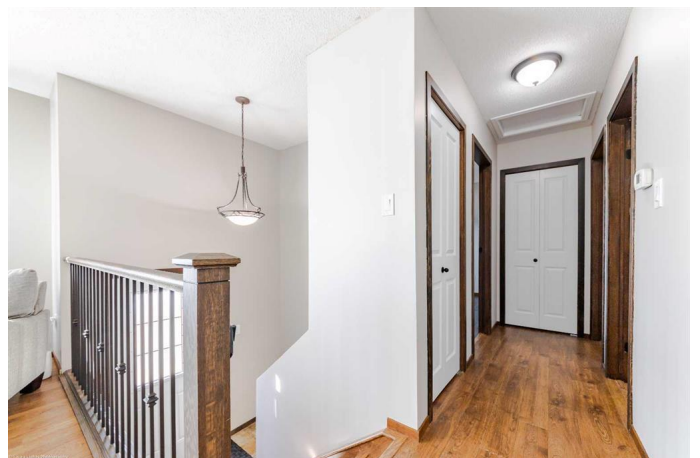
Steele Heights, Lloydminster, Alberta

Discover the perfect blend of comfort and style in this exquisite property nestled in the desirable Steele Heights neighborhood of Lloydminster. This charming home offers a total of four bedrooms, with a cozy gas fireplace adorning the main floor family room. The vaulted ceiling and wet bar area create an inviting space, ideal for entertaining guests. Meticulously maintained, the home showcases updated windows and siding, ensuring lasting beauty and durability. Step outside to a stunning private yard featuring a large deck, offering a serene escape in your very own backyard oasis. This property promises a delightful living experience, combining modern updates with timeless elegance. 3D Virtual Tour Available!

Built in 1974

Essential Information

| | |
|----------------|-------------|
| MLS® # | A2208000 |
| Price | \$289,900 |
| Bedrooms | 4 |
| Bathrooms | 2.00 |
| Full Baths | 1 |
| Half Baths | 1 |
| Square Footage | 1,266 |
| Acres | 0.17 |
| Year Built | 1974 |
| Type | Residential |



| | |
|----------|----------|
| Sub-Type | Detached |
| Style | Bi-Level |
| Status | Active |

Community Information

| | |
|-------------|----------------|
| Address | 5314 34 Street |
| Subdivision | Steele Heights |
| City | Lloydminster |
| County | Lloydminster |
| Province | Alberta |
| Postal Code | T9V 1G7 |

Amenities

| | |
|----------------|--------------------------------|
| Parking Spaces | 2 |
| Parking | Concrete Driveway, Parking Pad |

Interior

| | |
|-------------------|---|
| Interior Features | Wet Bar |
| Appliances | Dishwasher, Dryer, Microwave Hood Fan, Refrigerator, Stove(s), Washer |
| Heating | Forced Air, Natural Gas |
| Cooling | None |
| Fireplace | Yes |
| # of Fireplaces | 1 |
| Fireplaces | Family Room, Gas |
| Has Basement | Yes |
| Basement | Finished, Full |

Exterior

| | |
|-------------------|---|
| Exterior Features | None |
| Lot Description | Back Yard, Front Yard, Landscaped, Lawn, Rectangular Lot, Treed |
| Roof | Asphalt Shingle |
| Construction | Vinyl Siding, Wood Frame |
| Foundation | Wood |

Additional Information

| | |
|----------------|-----------------|
| Date Listed | April 9th, 2025 |
| Days on Market | 39 |
| Zoning | R1 |

Listing Details

Listing Office RE/MAX OF LLOYDMINSTER

Data is supplied by Pillar 9â„¢ MLS® System. Pillar 9â„¢ is the owner of the copyright in its MLS® System. Data is deemed reliable but is not guaranteed accurate by Pillar 9â„¢. The trademarks MLS®, Multiple Listing Service® and the associated logos are owned by The Canadian Real Estate Association (CREA) and identify the quality of services provided by real estate professionals who are members of CREA. Used under license.