

\$534,900 - 150 Norseman Close, Penhold

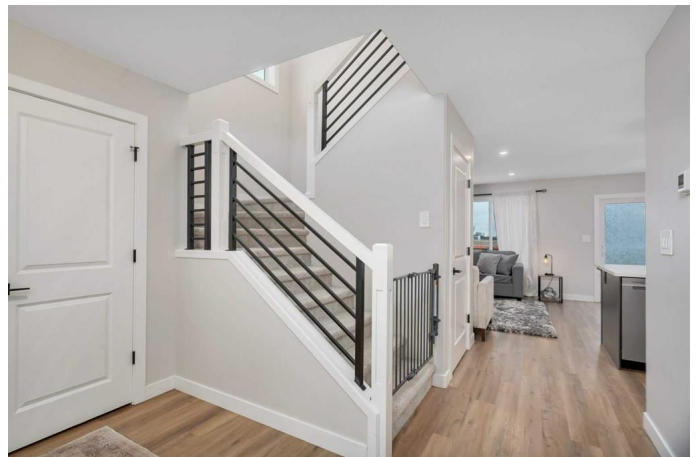
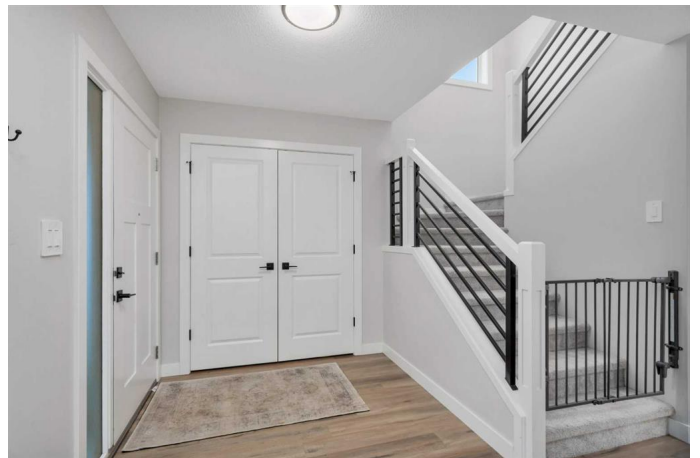
MLS® #A2207971

\$534,900

3 Bedroom, 3.00 Bathroom, 1,761 sqft
Residential on 0.12 Acres

Oxford Landing, Penhold, Alberta

If you are ready to live in a quiet, non congested smaller town that has pretty much all the amenities you will need then come check out this remarkable family home in the growing town of Penhold. Built in 2023 by Larkun Homes this 2 storey 3 bdrm house is ready for you to call it home! Walk up the composite front steps and through the front door to the beautiful large foyer that has a good sized coat closet and easy access to the 2 pc powder room. Walk in to the open concept kitchen dining room and living room. The Kitchen boasts beautiful two-toned white and grey cabinets, full tile backsplash, a large island with quartz countertops and plenty of pots and pans drawers, stainless steel appliances and an amazing walk through butler's pantry. Sliding patio doors lead out to a 14x10 wood deck with aluminum railing. Living room is well designed and has an electric fireplace to make your cool winter days/nights nice and cozy. Sit down and slip your shoes on and off on the convenient bench seat by the back door. Vinyl plank flooring throughout the main floor makes for low maintenance and easy clean-up. Primary bdrm has a phenomenal 5 pc ensuite. Two additional bdrms are on the 2nd level as well as the family room and laundry room. This amazing home has lots of big windows and great lighting to make it nice and bright. Downstairs has roughed in underfloor heating and is framed, insulated, wired and drywalled, leaving you in charge to finish as you like. Sod



and backyard fence was completed in Spring of 2024. 150 Norseman Close is situated on a quiet close that is close to schools, parks, playgrounds and shopping.

Built in 2023

Essential Information

MLS® #	A2207971
Price	\$534,900
Bedrooms	3
Bathrooms	3.00
Full Baths	2
Half Baths	1
Square Footage	1,761
Acres	0.12
Year Built	2023
Type	Residential
Sub-Type	Detached
Style	2 Storey
Status	Active

Community Information

Address	150 Norseman Close
Subdivision	Oxford Landing
City	Penhold
County	Red Deer County
Province	Alberta
Postal Code	T0M 1R0

Amenities

Parking Spaces	2
Parking	Double Garage Attached
# of Garages	2

Interior

Interior Features	Double Vanity, Kitchen Island, No Smoking Home, Pantry, Quartz Counters, Vinyl Windows, Walk-In Closet(s), Wired for Data, Bathroom Rough-in, Breakfast Bar
-------------------	---

Appliances	Dishwasher, Microwave, Refrigerator, Washer/Dryer, Stove(s)
Heating	Electric, Fireplace(s), Forced Air, Natural Gas, High Efficiency, In Floor Roughed-In
Cooling	None
Fireplace	Yes
# of Fireplaces	1
Fireplaces	Electric, Living Room
Has Basement	Yes
Basement	Full, Partially Finished

Exterior

Exterior Features	Fire Pit
Lot Description	Back Lane
Roof	Asphalt, Asphalt Shingle
Construction	Vinyl Siding, Wood Frame
Foundation	Poured Concrete

Additional Information

Date Listed	April 18th, 2025
Days on Market	28
Zoning	R1C

Listing Details

Listing Office	Coldwell Banker Ontrack Realty
----------------	--------------------------------

Data is supplied by Pillar 9â„¢ MLS® System. Pillar 9â„¢ is the owner of the copyright in its MLS® System. Data is deemed reliable but is not guaranteed accurate by Pillar 9â„¢. The trademarks MLS®, Multiple Listing Service® and the associated logos are owned by The Canadian Real Estate Association (CREA) and identify the quality of services provided by real estate professionals who are members of CREA. Used under license.