

\$439,900 - 81 Pinnacle Lake Drive, Grande Prairie

MLS® #A2204717

\$439,900

4 Bedroom, 3.00 Bathroom, 1,381 sqft

Residential on 0.12 Acres

Pinnacle Ridge., Grande Prairie, Alberta

Location! Location! Check out this fully developed 1381 sq ft modified bi-level in Pinnacle Ridge. This home features 4 bedrooms, 3 bathrooms, and an open-concept main floor with vaulted ceilings. This home is conveniently located within walking distance of the Eastlink Centre, Public and Catholic high schools, and the South 40 Shopping Centre. This perfect family home is waiting for its new owners.

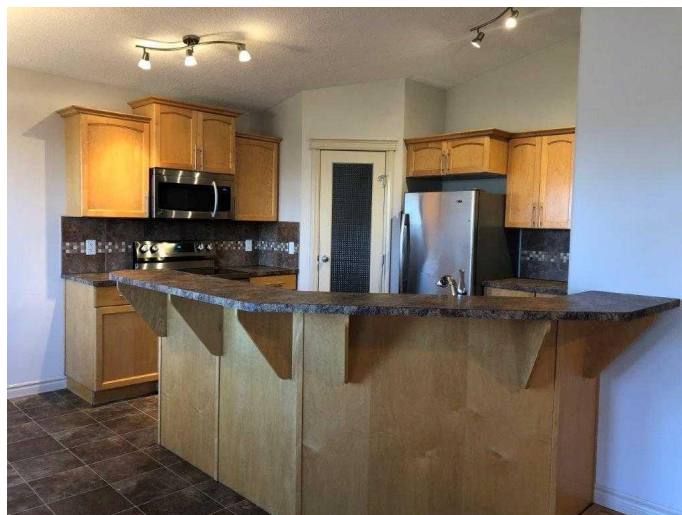
Built in 2006

Essential Information

MLS® #	A2204717
Price	\$439,900
Bedrooms	4
Bathrooms	3.00
Full Baths	3
Square Footage	1,381
Acres	0.12
Year Built	2006
Type	Residential
Sub-Type	Detached
Style	Modified Bi-Level
Status	Active

Community Information

Address	81 Pinnacle Lake Drive
Subdivision	Pinnacle Ridge.



City	Grande Prairie
County	Grande Prairie
Province	Alberta
Postal Code	T8W 0A9

Amenities

Parking Spaces	4
Parking	Double Garage Attached, Parking Pad
# of Garages	2

Interior

Interior Features	See Remarks
Appliances	Dishwasher, Dryer, Microwave Hood Fan, Oven, Range, Washer, Window Coverings
Heating	Forced Air, Natural Gas
Cooling	None
Fireplace	Yes
# of Fireplaces	1
Fireplaces	Gas
Has Basement	Yes
Basement	Finished, Full

Exterior

Exterior Features	Other
Lot Description	No Neighbours Behind, See Remarks
Roof	Asphalt Shingle
Construction	Concrete, Vinyl Siding, Wood Frame
Foundation	Poured Concrete

Additional Information

Date Listed	March 29th, 2025
Days on Market	128
Zoning	RS

Listing Details

Listing Office	Grassroots Realty Group Ltd.
----------------	------------------------------

Data is supplied by Pillar 9â„¢ MLS® System. Pillar 9â„¢ is the owner of the copyright in its MLS® System. Data is deemed reliable but is not guaranteed accurate by Pillar 9â„¢. The trademarks MLS®, Multiple Listing Service® and the associated logos are owned by The Canadian Real Estate Association (CREA) and identify the quality of services provided by real estate professionals who are members of CREA. Used under license.