

# \$434,900 - 74 Pine Crescent, Blackfalds

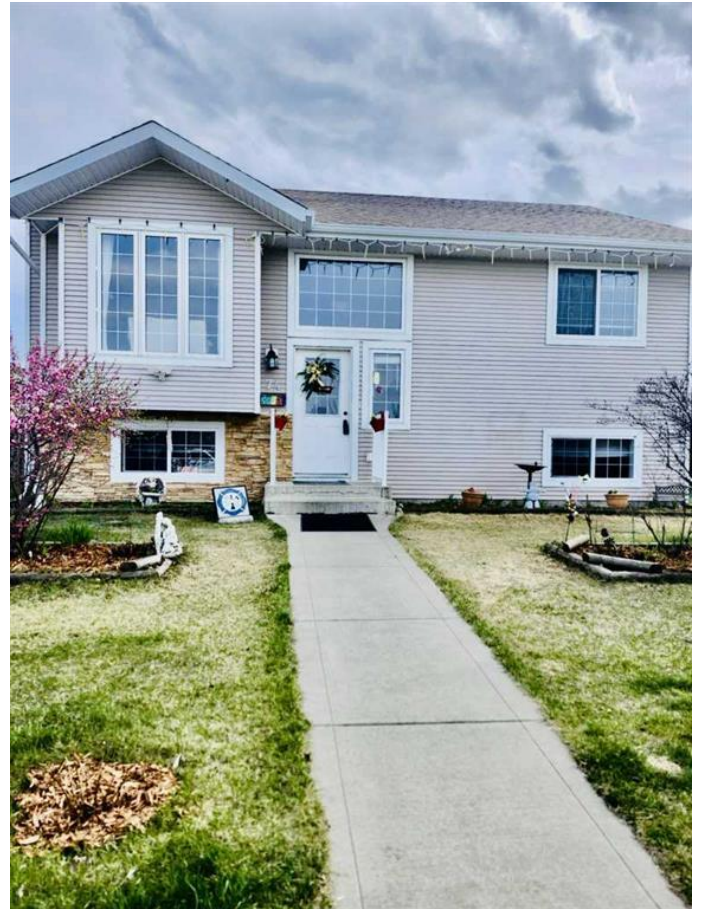
MLS® #A2203541

**\$434,900**

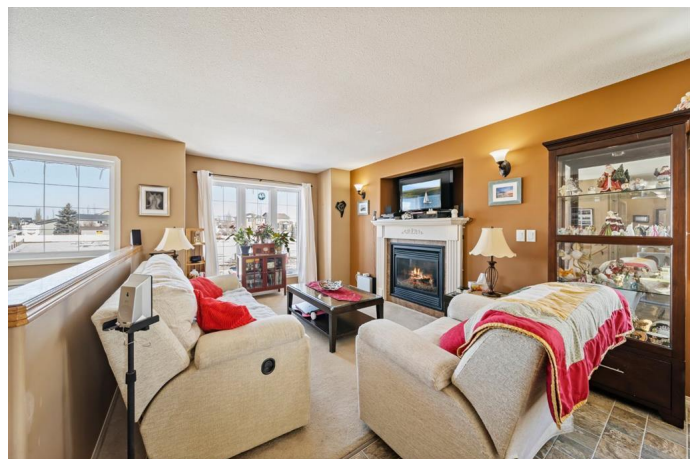
4 Bedroom, 3.00 Bathroom, 1,213 sqft  
Residential on 0.16 Acres

Panorama Estates, Blackfalds, Alberta

BEAUTIFUL 4 BEDS, 3 BATHS FULLY FINISHED BI-LEVEL WITH A DOUBLE DETACHED GARAGE – A MUST-SEE! Nestled in the highly sought-after, family-friendly neighborhood of PANORAMA ESTATES & featuring 2282 developed sq ft, this beautiful TRUE LINE build 4-bedroom, 3-bathroom home is sure to impress. Offering a spacious and open-concept main floor, this home exudes warmth and charm, making it the perfect space for your family to grow. The bright and inviting LIVING ROOM features a cozy GAS FIREPLACE, creating the ideal spot for relaxation. The adjacent DINING AREA provides ample space for family meals, while the spacious KITCHEN is a chef's dream, with plenty of cabinetry, stainless steel appliances, ( the fridge & dishwasher were recently purchased -2 weeks ago and the stove has an air fryer option. bread proof and a grill top option), an ISLAND with drawers and a glass cabinet and a convenient pantry. On the main floor, you'll also find the generously-sized MASTER BEDROOM, complete with a walk-in closet and a private 3-piece en-Suite for your ultimate comfort. An additional 4-piece BATHROOM with a JETTED TUB ,another spacious BEDROOM, the LAUNDRY AREA & a LINEN CLOSET round out this level, providing everything you need for convenience and comfort. Large windows throughout allow an abundance of natural light to flood the home, making every room feel bright and welcoming. The FULLY FINISHED



**BASEMENT** is the perfect space for entertaining or relaxation. It features a spacious **FAMILY ROOM**, 2 additional **BEDROOMS**, and another 4-piece **BATHROOM** with a large closet. There is also a linen closet. One of the bedrooms is roughed in for a **KITCHENETTE**—the stove is already installed, and the sink will be added shortly. The basement also includes a mechanical room and under-the-stairs storage. There is also roughed in vacuum. Step outside to your **PARTIALLY FENCED BACKYARD** which is **FULLY LANDSCAPED** & it includes a really nice **DECK**, a large **DOUBLE DETACHED GARAGE**, **RV PARKING**, and a 10x12 **SHED**—perfect for storing all your outdoor gear. There's also a back lane & worth mentioning is the fact that the shingles on the house ( not the garage) were replaced last year ( October) Ideally located near all the amenities you could need in Blackfalds, including the Abbey Centre, the Blackfalds Community Centre, and several schools such as Iron Ridge (Elementary, Intermediate & Junior) Campus and St. Gregory the Great Catholic School, this home is also just across from Pine Crescent Park, which features a large open green space, a playground, the Pine Crescent Community Garden, a skateboard park, and an outdoor ice rink—making it the perfect spot for family outings. This is truly the perfect family home—ready for you to move in, enjoy, and make it your own! Don't miss out on this incredible opportunity!



Built in 2007

### **Essential Information**

MLS® #

A2203541

Price	\$434,900
Bedrooms	4
Bathrooms	3.00
Full Baths	3
Square Footage	1,213
Acres	0.16
Year Built	2007
Type	Residential
Sub-Type	Detached
Style	Bi-Level
Status	Active

### **Community Information**

Address	74 Pine Crescent
Subdivision	Panorama Estates
City	Blackfalds
County	Lacombe County
Province	Alberta
Postal Code	T4M 0E2

### **Amenities**

Parking Spaces	2
Parking	Double Garage Detached, Off Street, RV Access/Parking
# of Garages	2

### **Interior**

Interior Features	Closet Organizers, Jetted Tub, Kitchen Island, Pantry, Storage, Vinyl Windows, Walk-In Closet(s)
Appliances	Dishwasher, Microwave, Refrigerator, Stove(s), Washer/Dryer, Window Coverings
Heating	Forced Air
Cooling	None
Fireplace	Yes
# of Fireplaces	1
Fireplaces	Gas, Living Room
Has Basement	Yes
Basement	Finished, Full

### **Exterior**

Exterior Features	Lighting
Lot Description	Back Lane, Back Yard, Landscaped
Roof	Asphalt Shingle
Construction	Shingle Siding, Vinyl Siding, Wood Frame
Foundation	Poured Concrete

### **Additional Information**

Date Listed	March 18th, 2025
Days on Market	56
Zoning	R1M

### **Listing Details**

Listing Office	eXp Realty
----------------	------------

Data is supplied by Pillar 9â„¸ MLSÂ® System. Pillar 9â„¸ is the owner of the copyright in its MLSÂ® System. Data is deemed reliable but is not guaranteed accurate by Pillar 9â„¸. The trademarks MLSÂ®, Multiple Listing ServiceÂ® and the associated logos are owned by The Canadian Real Estate Association (CREA) and identify the quality of services provided by real estate professionals who are members of CREA. Used under license.