

# **\$850,000 - 84071 Hwy 810, Rural Willow Creek No. 26, M.D. of**

---

MLS® #A2197090

**\$850,000**

5 Bedroom, 3.00 Bathroom, 1,866 sqft  
Residential on 10.00 Acres

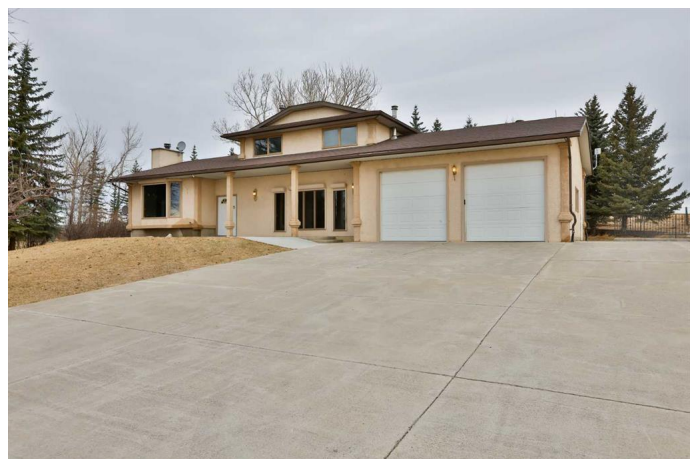
NONE, Rural Willow Creek No. 26, M.D. of,  
Alberta

OPEN HOUSE BY APPOINTMENT .....10  
ACRES!!!! HUGEEEEEEEE QUONSET!!! WELL  
TREED !!! 1844 SQ. FT FAMILY HOME WITH  
FIVE BEDROOMS AND 3 BATHROOMS ON  
A PAVED ROAD. HIGHLIGHTING AN  
UPGRADED KITCHEN WITH STAINLESS  
STEEL APPLIANCES, A LARGE INVITING  
FAMILY ROOM , MAIN FLOOR LAUNDRY,  
AND AN ATTACHED HEATED 26X28 FT  
GARAGE . TONS AND TONS OF  
POSSIBILITIES WITH THIS RECTANGLE  
PIECED YARD, A GOOD MIX FOR ANIMALS,  
GARDENS, STORAGE, AND OF COURSE  
THIS MASSIVE 68X 100 FT HEATED SHOP.

Built in 1980

## **Essential Information**

MLS® #	A2197090
Price	\$850,000
Bedrooms	5
Bathrooms	3.00
Full Baths	2
Half Baths	1
Square Footage	1,866
Acres	10.00
Year Built	1980
Type	Residential



Sub-Type	Detached
Style	Acreage with Residence, 3 Level Split
Status	Active

### Community Information

Address	84071 Hwy 810
Subdivision	NONE
City	Rural Willow Creek No. 26, M.D. of
County	Willow Creek No. 26, M.D. of
Province	Alberta
Postal Code	T0L 0Z0

### Amenities

Parking	Double Garage Attached, Parking Pad, RV Access/Parking
# of Garages	2

### Interior

Interior Features	Open Floorplan
Appliances	None
Heating	Forced Air
Cooling	Central Air
Fireplace	Yes
# of Fireplaces	1
Fireplaces	Wood Burning
Has Basement	Yes
Basement	Finished, Full

### Exterior

Exterior Features	Garden, Storage
Lot Description	Farm, Garden, Many Trees
Roof	Asphalt Shingle
Construction	Stucco
Foundation	Other

### Additional Information

Date Listed	March 24th, 2025
Days on Market	132
Zoning	RURAL GENERAL

### Listing Details

Listing Office

RE/MAX REAL ESTATE - LETHBRIDGE

Data is supplied by Pillar 9â„¢ MLSÂ® System. Pillar 9â„¢ is the owner of the copyright in its MLSÂ® System. Data is deemed reliable but is not guaranteed accurate by Pillar 9â„¢. The trademarks MLSÂ®, Multiple Listing ServiceÂ® and the associated logos are owned by The Canadian Real Estate Association (CREA) and identify the quality of services provided by real estate professionals who are members of CREA. Used under license.