

\$529,900 - 12838 87a Street, Grande Prairie

MLS® #A2190738

\$529,900

3 Bedroom, 3.00 Bathroom, 1,908 sqft

Residential on 0.09 Acres

Easthaven, Grande Prairie, Alberta

Capture the Extraordinary opportunity to own an amazing property in Grande Prairie's newest modern community of EASTHAVEN. Front Drive 112 New Construction Home | 2 Storey | 1908 Sq.Ft. | 3-Bedrooms | 2.5-Bathrooms | Open Floor Plan | 9' High Ceilings | Chef's Kitchen | Pantry | Luxury Vinyl & Tile Plank Flooring | Upper-Level Bonus Room | Appliances Included | Upper Level Laundry | Loaded with Upgrades | Attached Extra Deep Double Garage | Nice Lot with easement behind | Partially Fenced. Presenting Front Drive 112 a showstopping two-storey home that is going to capture your attention from the moment you walk-thru the door. Now let's begin our tour and start to check the boxes on your list: Beautiful Entry loaded with natural light & closet, main floor powder room, mudroom with bench leading to garage access great feature for busy families, kitchen pantry with great storage & shelving, open concept kitchen/dining/great room. This brand new home features quartz counters throughout, luxury vinyl plank & tiled floors, upgraded millwork, triple pane windows, floor drains in laundry area + garage, upgraded lighting/plumbing fixtures and so much more!!! Now onto the upper level: Primary suite offers great privacy being separated from the other bedrooms by the bonus room, also comes with large window overlooking the backyard, five-piece ensuite with freestanding tub, shower stall, dual sinks will take you away and make you feel like you are in a spa, huge



walk-in closet completes the package. A well-designed laundry room with a brand-new washer & dryer(included) located near the bedrooms. Bedrooms 2 + 3 offer large window for natural light. The adjoining 4pc. bathroom with bathtub plus dual sinks is easily accessible. The upper-level bonus room has quickly become the staple in the larger two storey home, it could be your additional family room, kids play room, workout area, music space or anything that fits your needs. A side entrance to the home that leads to the lower level can offer many different options, even a potential to develop a basement suite which is very popular in today's world. Built and designed by Anthem properties. Anthem doesn't just build homes, they create communities. With over 30 years of experience Anthem is proud to be able to build homes designed for you. Home is complete and ready for immediate possession. Call today to arrange your private tour!!!

Built in 2024

Essential Information

MLS® #	A2190738
Price	\$529,900
Bedrooms	3
Bathrooms	3.00
Full Baths	2
Half Baths	1
Square Footage	1,908
Acres	0.09
Year Built	2024
Type	Residential
Sub-Type	Detached
Style	2 Storey
Status	Active

Community Information

Address	12838 87a Street
Subdivision	Easthaven
City	Grande Prairie
County	Grande Prairie
Province	Alberta
Postal Code	T8X 0H4

Amenities

Parking Spaces	4
Parking	Double Garage Attached
# of Garages	2

Interior

Interior Features	Double Vanity, Kitchen Island, Walk-In Closet(s)
Appliances	Dishwasher, Microwave, Refrigerator
Heating	High Efficiency
Cooling	None
Fireplace	Yes
# of Fireplaces	1
Fireplaces	Electric, Living Room
Has Basement	Yes
Basement	Full, Unfinished

Exterior

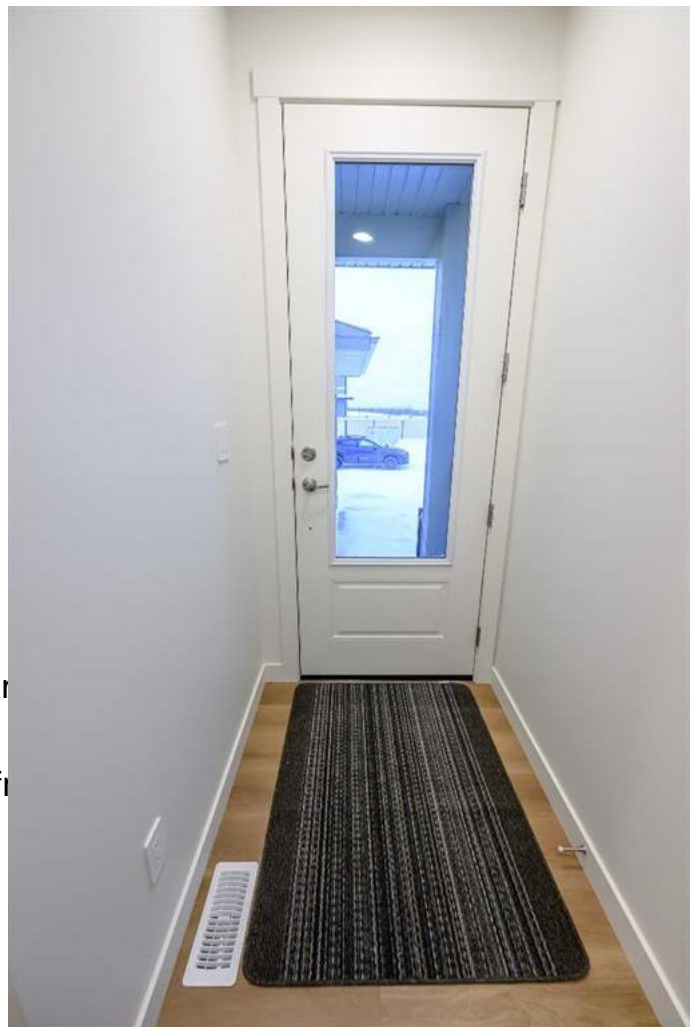
Exterior Features	Private Yard
Lot Description	Rectangular Lot
Roof	Asphalt Shingle
Construction	Vinyl Siding
Foundation	Poured Concrete

Additional Information

Date Listed	February 3rd, 2025
Days on Market	126
Zoning	RR

Listing Details

Listing Office	RE/MAX Grande Prairie
----------------	-----------------------



deemed reliable but is not guaranteed accurate by Pillar 9. The trademarks MLS®, Multiple Listing Service® and the associated logos are owned by The Canadian Real Estate Association (CREA) and identify the quality of services provided by real estate professionals who are members of CREA. Used under license.