

# \$484,900 - 2615 44 Street S, Lethbridge

MLS® #A2189410

## \$484,900

3 Bedroom, 3.00 Bathroom, 1,406 sqft  
Residential on 0.09 Acres

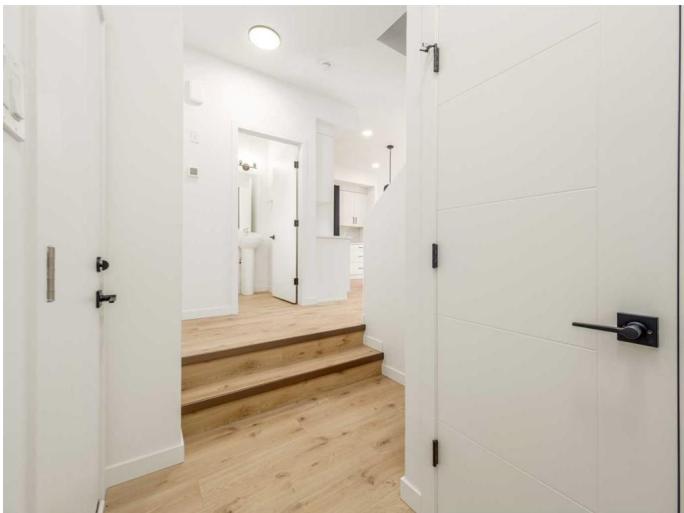
Discovery, Lethbridge, Alberta

The popular "Grayson" model by Avonlea Homes. Check out these great new elevations. This home is located close to SCHOOL, PARK AND PLAYGROUND IN SOUTHBROOK. Nice and open floor plan on the main floor, 9' Flat Painted ceilings, large windows for that extra sunlight, quartz countertops. Great corner pantry in the kitchen for storage. Upstairs there are 3 nice bedrooms, full bath, convenience of laundry, master bedroom with walk in closet and ensuite with 5' shower. The Basement is undeveloped but set up for a family room, 4th bedroom and another full bath. Enjoy the insulated Double attached garage to keep those vehicles warm and dry. Located in the architecturally controlled community of Southbrook with school, playground and park for the whole family to enjoy. Close to lots of amenities the Southside has to offer. NHW. House is virtually staged

Built in 2024

### Essential Information

|                |           |
|----------------|-----------|
| MLS® #         | A2189410  |
| Price          | \$484,900 |
| Bedrooms       | 3         |
| Bathrooms      | 3.00      |
| Full Baths     | 2         |
| Half Baths     | 1         |
| Square Footage | 1,406     |
| Acres          | 0.09      |



|            |             |
|------------|-------------|
| Year Built | 2024        |
| Type       | Residential |
| Sub-Type   | Detached    |
| Style      | 2 Storey    |
| Status     | Active      |

### Community Information

|             |                  |
|-------------|------------------|
| Address     | 2615 44 Street S |
| Subdivision | Discovery        |
| City        | Lethbridge       |
| County      | Lethbridge       |
| Province    | Alberta          |
| Postal Code | T1K8L6           |

### Amenities

|                |                        |
|----------------|------------------------|
| Parking Spaces | 4                      |
| Parking        | Double Garage Attached |
| # of Garages   | 2                      |

### Interior

|                   |  |
|-------------------|--|
| Interior Features | Kitchen Island, Pantry, Walk-In Closet(s)                    |
| Appliances        | Dishwasher, Electric Range, Microwave Hood Fan, Refrigerator |
| Heating           | Forced Air   |
| Cooling           | None   |
| Has Basement      | Yes  |
| Basement          | Full, Unfinished   |

### Exterior

|                   |                                    |
|-------------------|------------------------------------|
| Exterior Features | None                               |
| Lot Description   | Back Lane                          |
| Roof              | Asphalt Shingle                    |
| Construction      | Concrete, Vinyl Siding, Wood Frame |
| Foundation        | Poured Concrete                    |

### Additional Information

|                |                    |
|----------------|--------------------|
| Date Listed    | January 22nd, 2025 |
| Days on Market | 105                |
| Zoning         | RL                 |

### Listing Details

Listing Office

RE/MAX REAL ESTATE - LETHBRIDGE

Data is supplied by Pillar 9â„¢ MLSÂ® System. Pillar 9â„¢ is the owner of the copyright in its MLSÂ® System. Data is deemed reliable but is not guaranteed accurate by Pillar 9â„¢. The trademarks MLSÂ®, Multiple Listing ServiceÂ® and the associated logos are owned by The Canadian Real Estate Association (CREA) and identify the quality of services provided by real estate professionals who are members of CREA. Used under license.