

# \$249,000 - Pt Of, Rural Wainwright No. 61, M.D. of

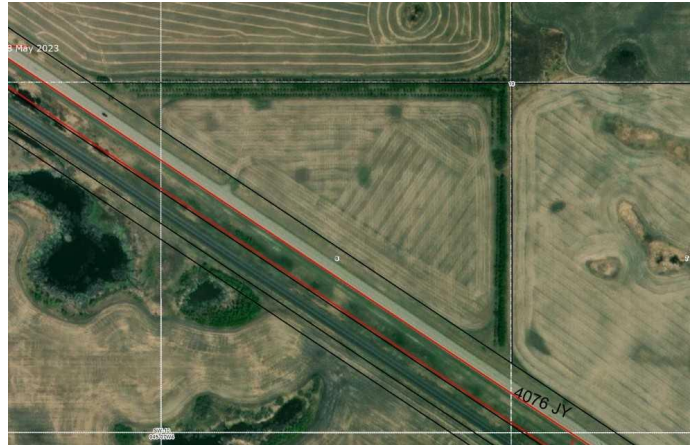
MLS® #A2188155

## \$249,000

0 Bedroom, 0.00 Bathroom,  
Land on 19.44 Acres

NONE, Rural Wainwright No. 61, M.D. of,  
Alberta

This parcel is situated immediately adjacent to Highway 14, approximately 2 miles west of Wainwright on the North side of the highway. It features a mature shelterbelt along the North and East boundaries, enhancing its overall appeal for both residential and commercial purposes.



## Essential Information

MLS® #	A2188155
Price	\$249,000
Bathrooms	0.00
Acres	19.44
Type	Land
Sub-Type	Commercial Land
Status	Active

## Community Information

Address	Pt Of
Subdivision	NONE
City	Rural Wainwright No. 61, M.D. of
County	Wainwright No. 61, M.D. of
Province	Alberta
Postal Code	T9W 1T9

## Additional Information

Date Listed	January 16th, 2025
Days on Market	205

Zoning AG

## **Listing Details**

Listing Office CENTURY 21 CONNECT REALTY

Data is supplied by Pillar 9â„¸ MLSÂ® System. Pillar 9â„¸ is the owner of the copyright in its MLSÂ® System. Data is deemed reliable but is not guaranteed accurate by Pillar 9â„¸. The trademarks MLSÂ®, Multiple Listing ServiceÂ® and the associated logos are owned by The Canadian Real Estate Association (CREA) and identify the quality of services provided by real estate professionals who are members of CREA. Used under license.