

\$129,900 - Pt Ne 06-49-26 W3, Marshall

MLS® #A2188032

\$129,900

0 Bedroom, 0.00 Bathroom,
Land on 5.18 Acres

NONE, Marshall, Saskatchewan

Commercial land opportunity available adjacent to Town of Marshall, the railway tracks and Highway 16. Over 5 acres of developable land with many commercial and business applications. This would make a great location for service company, commercial shop, yard space etc. With easy access to the highway and also the added opportunity being beside the railway tracks. The property is under the Municipality of the Town of Marshall for business and land use approvals.

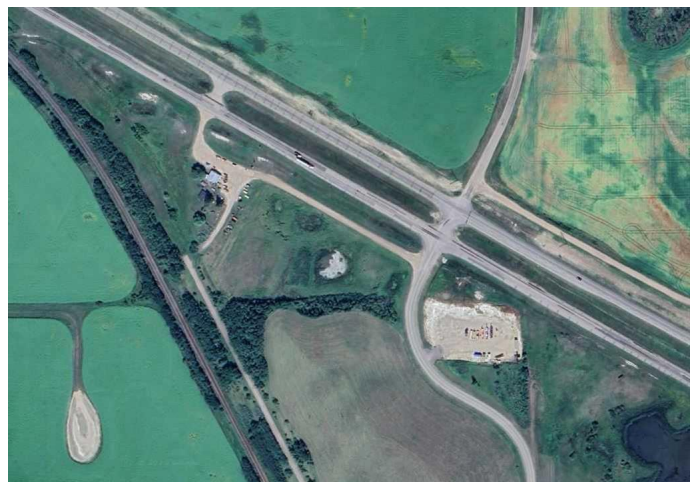
Essential Information

| | |
|-----------|-----------------|
| MLS® # | A2188032 |
| Price | \$129,900 |
| Bathrooms | 0.00 |
| Acres | 5.18 |
| Type | Land |
| Sub-Type | Commercial Land |
| Status | Active |

Community Information

| | |
|-------------|-------------------|
| Address | Pt Ne 06-49-26 W3 |
| Subdivision | NONE |
| City | Marshall |
| County | Saskatchewan |
| Province | Saskatchewan |
| Postal Code | S0M 1R0 |

Additional Information



| | |
|----------------|---------------------|
| Date Listed | February 11th, 2025 |
| Days on Market | 92 |
| Zoning | Commercial |

Listing Details

| | |
|----------------|-------------------|
| Listing Office | MUSGRAVE AGENCIES |
|----------------|-------------------|

Data is supplied by Pillar 9â„¢ MLS® System. Pillar 9â„¢ is the owner of the copyright in its MLS® System. Data is deemed reliable but is not guaranteed accurate by Pillar 9â„¢. The trademarks MLS®, Multiple Listing Service® and the associated logos are owned by The Canadian Real Estate Association (CREA) and identify the quality of services provided by real estate professionals who are members of CREA. Used under license.