

\$648,000 - 262098 Range Road 33, Rural Rocky View County

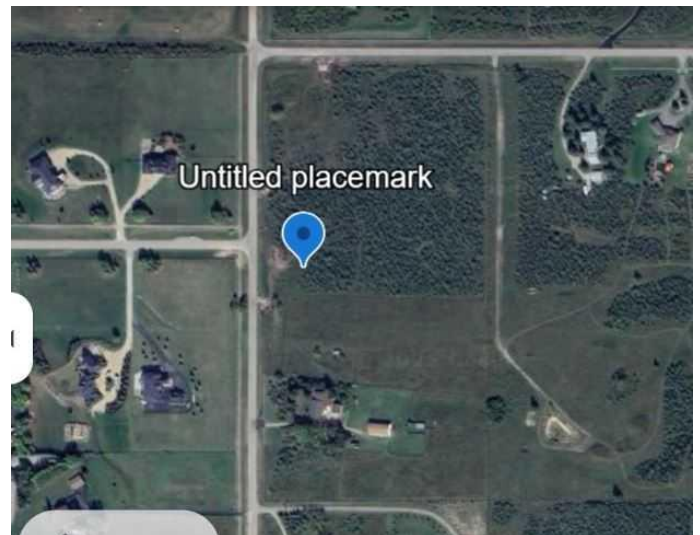
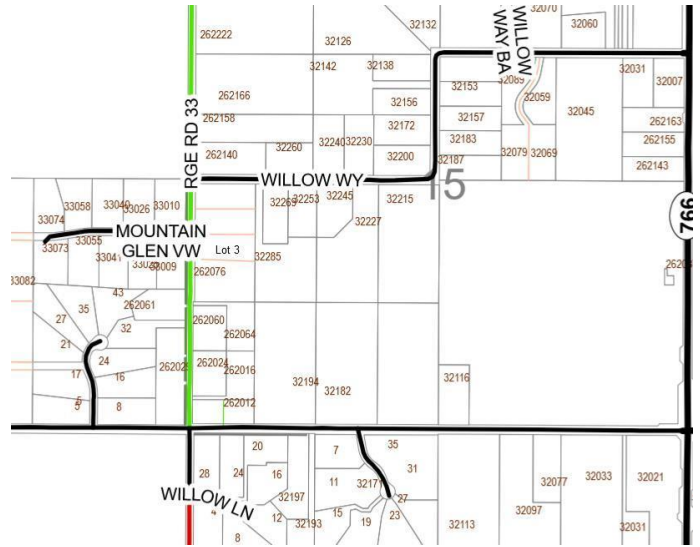
MLS® #A2187773

\$648,000

0 Bedroom, 0.00 Bathroom,
Land on 4.00 Acres

Bearspaw_Calg, Rural Rocky View County,
Alberta

This is a very private treed and Mountain view lot 4 acre lot located in Bearspaw. The property is generally flat. The north half is heavily treed with willows, and the south half is generally open. Great building sites. Range Road 33 is paved right to the gate. The paved approach on the east side of RR 33 has minimal grade change, and leads to the a building site in the trees or to the open area. The Zoning is R-RUR, so some animals on site are permitted. Since most of the land is treed, it will be easy to maintain the open (pasture) area and leave the sheltered treed area for wildlife. Great south exposure. The new title should be in place by the end of June.



Essential Information

| | |
|-----------|------------------|
| MLS® # | A2187773 |
| Price | \$648,000 |
| Bathrooms | 0.00 |
| Acres | 4.00 |
| Type | Land |
| Sub-Type | Residential Land |
| Status | Active |

Community Information

| | |
|-------------|----------------------|
| Address | 262098 Range Road 33 |
| Subdivision | Bearspaw_Calg |



| | |
|-------------|-------------------------|
| City | Rural Rocky View County |
| County | Rocky View County |
| Province | Alberta |
| Postal Code | T4C 1A2 |

Additional Information

| | |
|----------------|--------------------|
| Date Listed | January 17th, 2025 |
| Days on Market | 198 |
| Zoning | R-CRD |

Listing Details

| | |
|----------------|------------------------------------|
| Listing Office | RE/MAX Real Estate (Mountain View) |
|----------------|------------------------------------|

Data is supplied by Pillar 9â„¢ MLS® System. Pillar 9â„¢ is the owner of the copyright in its MLS® System. Data is deemed reliable but is not guaranteed accurate by Pillar 9â„¢. The trademarks MLS®, Multiple Listing Service® and the associated logos are owned by The Canadian Real Estate Association (CREA) and identify the quality of services provided by real estate professionals who are members of CREA. Used under license.