

# \$189,000 - 9510 90 Avenue, Peace River

MLS® #A2162517

**\$189,000**

0 Bedroom, 0.00 Bathroom,  
Commercial on 0.00 Acres

North End., Peace River, Alberta

Perfect building for industrial retail and or warehouse space located towards the north end next to other light industrial properties. Building is all set up for loading/unloading into the warehouse space and has a good sized area for retail as well. There is plenty of parking as well with a little over half an acre on the 3 lots. Call to set up an appointment to view and see what this property has to offer.

Built in 1965

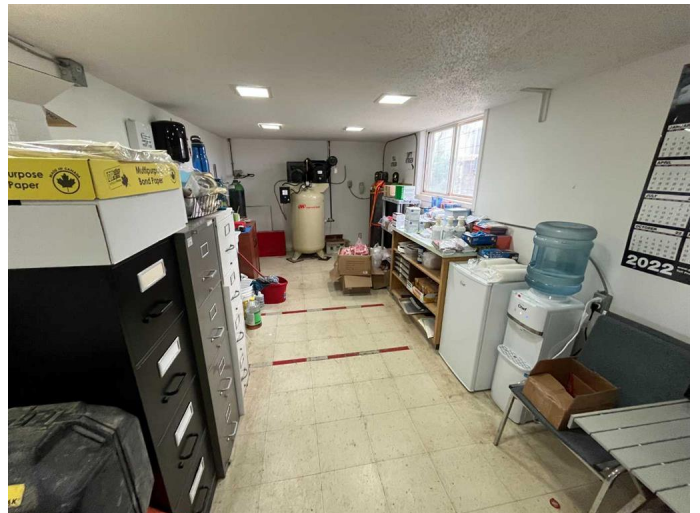
## Essential Information

MLS® #	A2162517
Price	\$189,000
Bathrooms	0.00
Acres	0.00
Year Built	1965
Type	Commercial
Sub-Type	Mixed Use
Status	Active

## Community Information

Address	9510 90 Avenue
Subdivision	North End.
City	Peace River
County	Peace No. 135, M.D. of
Province	Alberta
Postal Code	T8S 1G8

## Additional Information



Date Listed	September 3rd, 2024
Days on Market	337
Zoning	mixed industrial/business

### **Listing Details**

Listing Office	Royal LePage Valley Realty
----------------	----------------------------

Data is supplied by Pillar 9â„¢ MLS® System. Pillar 9â„¢ is the owner of the copyright in its MLS® System. Data is deemed reliable but is not guaranteed accurate by Pillar 9â„¢. The trademarks MLS®, Multiple Listing Service® and the associated logos are owned by The Canadian Real Estate Association (CREA) and identify the quality of services provided by real estate professionals who are members of CREA. Used under license.