

# \$535,900 - 18 Palmer Circle, Blackfalds

MLS® #A2143466

## \$535,900

3 Bedroom, 2.00 Bathroom, 1,586 sqft  
Residential on 0.09 Acres

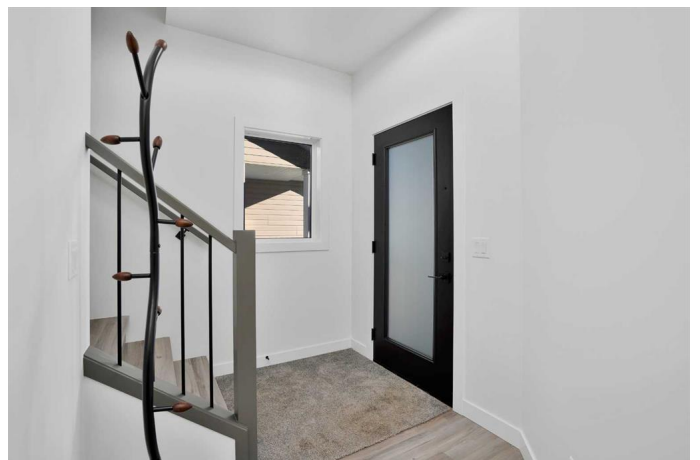
Panorama Estates, Blackfalds, Alberta

Welcome to the RUBY built by Award Winning Abbey Platinum Master Built on the highly desirable Palmer Circle in Blackfalds. This 1586 sq foot 2 storey has an amazing modern sight lines and curb appeal with stunning brick accents, wood grain metal siding . A spacious entrance greets you as you enter this 3 bedroom 2.5 bath home. An open floor plan , living room with a fireplace , large kitchen with amazing backsplash and quartz countertops . As you take a walk upstairs you will find a Primary bedroom with a 3 pcs ensuite, as well as 2 more ample sized bedrooms and a 4 pc bath. This home has an upstairs laundry are for added convivence. The unfinished basement features 9 foot ceilings and can accommodate a 4 pcs bath, family room and a bedroom, just add your own creative design.

Built in 2024

### Essential Information

MLS® #	A2143466
Price	\$535,900
Bedrooms	3
Bathrooms	2.00
Full Baths	1
Half Baths	1
Square Footage	1,586
Acres	0.09
Year Built	2024



Type	Residential
Sub-Type	Detached
Style	2 Storey
Status	Active

### **Community Information**

Address	18 Palmer Circle
Subdivision	Panorama Estates
City	Blackfalds
County	Lacombe County
Province	Alberta
Postal Code	T4M 0N7

### **Amenities**

Parking Spaces	2
Parking	Double Garage Attached
# of Garages	2

### **Interior**

Interior Features	Kitchen Island, No Smoking Home
Appliances	Dishwasher, Microwave, Refrigerator, Range
Heating	High Efficiency
Cooling	None
Has Basement	Yes
Basement	Full, Unfinished

### **Exterior**

Exterior Features	None
Lot Description	Back Lane, Front Yard, Gentle Sloping, Private
Roof	Asphalt Shingle
Construction	Brick, Concrete, Vinyl Siding, Wood Frame
Foundation	Poured Concrete

### **Additional Information**

Date Listed	July 4th, 2024
Days on Market	394
Zoning	R1M

### **Listing Details**

Listing Office

RE/MAX real estate central alberta

Data is supplied by Pillar 9â„¸ MLSÂ® System. Pillar 9â„¸ is the owner of the copyright in its MLSÂ® System. Data is deemed reliable but is not guaranteed accurate by Pillar 9â„¸. The trademarks MLSÂ®, Multiple Listing ServiceÂ® and the associated logos are owned by The Canadian Real Estate Association (CREA) and identify the quality of services provided by real estate professionals who are members of CREA. Used under license.