

# \$3,500,000 - # 2 & # 72 Highways, Rural Rocky View County

---

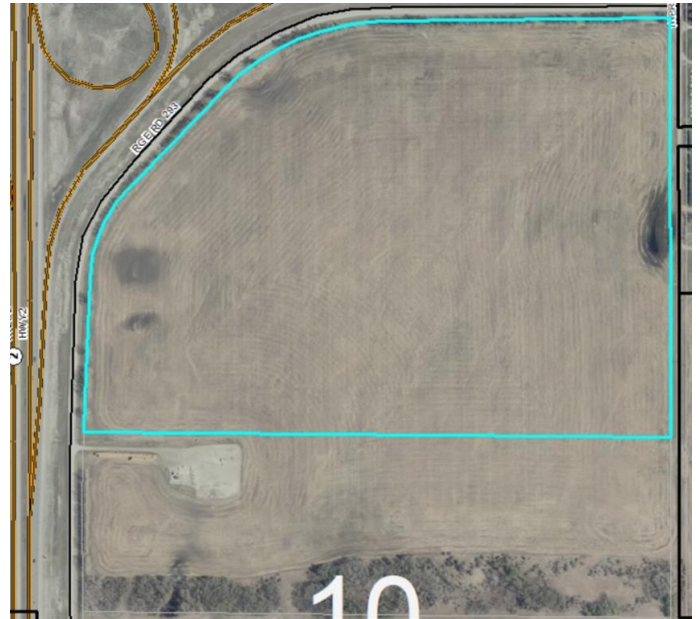
MLS® #A1057700

**\$3,500,000**

0 Bedroom, 0.00 Bathroom,  
Land on 87.53 Acres

NONE, Rural Rocky View County, Alberta

A great parcel of land situated on the SE corner of highways # 2 & # 72 approximately 6 miles north of Airdrie . Zoned as agricultural land at this time , there is potential for possible zoning changes down the road. This property is lined with mature trees on two sides and has road access on three sides . Two of these roads are paved . This land has a very gentle slope facing the highway giving it great exposure for motorists and also revealing a decent view of the mountains from all points of the land . The ideas are endless for this land . There is also a 42 acre parcel immediately to the south also for sale. MLS # A1235902



## Essential Information

MLS® #	A1057700
Price	\$3,500,000
Bathrooms	0.00
Acres	87.53
Type	Land
Sub-Type	Land
Status	Active

## Community Information

Address	# 2 & # 72 Highways
Subdivision	NONE
City	Rural Rocky View County

County	Rocky View County
Province	Alberta
Postal Code	T0M 0S0

### **Amenities**

Utilities	Electricity at Lot Line, Natural Gas at Lot Line
-----------	--

### **Additional Information**

Date Listed	January 7th, 2021
Days on Market	1667
Zoning	A-General

### **Listing Details**

Listing Office	MAXWELL CAPITAL REALTY
----------------	------------------------

Data is supplied by Pillar 9â„¢ MLS® System. Pillar 9â„¢ is the owner of the copyright in its MLS® System. Data is deemed reliable but is not guaranteed accurate by Pillar 9â„¢. The trademarks MLS®, Multiple Listing Service® and the associated logos are owned by The Canadian Real Estate Association (CREA) and identify the quality of services provided by real estate professionals who are members of CREA. Used under license.